

Anti-Cyclophilin A/PPIA Rabbit pAb



WL00258

For Research Use Only. Not For Use In Diagnostic Procedures

Product Information

Product name	Anti-Cyclophilin A/PPIA Rabbit pAb
Source	Rabbit
Species reactivity	Human, Mouse, Rat, Cow
Tested applications	WB 1:1000
Cellular localization	Secreted and Cell membrane
Pack size	50/100/200/500/1000µl
Storage	Store at -20°C. Avoid freeze/thaw cycles.
Storage buffer	Supplied in 20 mM phosphate (pH 7.5), 150 mM NaCl, 100 µg/ml BSA, 50% glycerol and less than 0.02% sodium azide

General Information

Background Cyclophilin A, also named as PPIA and Rotamase A, belongs to the cyclophilin-type PPIase family and PPIase A subfamily. PPIases accelerate the folding of proteins. It catalyzes the cis-trans isomerization of proline imidic peptide bonds in oligopeptides. PPIA forms a trimolecular complex with cyclophilin and calcineurins to inhibit calcineurin phosphatase activity. The encoded protein is a cyclosporin binding-protein and may play a role in cyclosporin A-mediated immunosuppression.

Immunogen Polyclonal antibody is produced by immunizing animals with a synthetic peptide of Cyclophilin A/PPIA.

Purification Polyclonal antibody was purified by immunogen affinity chromatography.

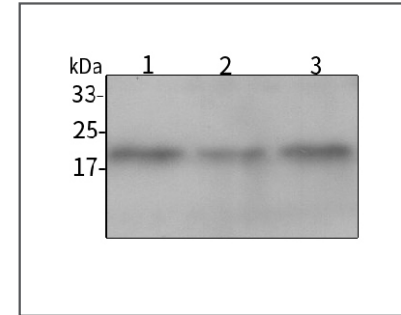
Anti-Cyclophilin A/PPIA Rabbit pAb



WL00258

For Research Use Only. Not For Use In Diagnostic Procedures

Product Images



Western blot-Anti-Cyclophilin A/PPIA pAb

Lane 1: Human MBA-MB-231 cell lysate

Lane 2: Human A549 cell lysate

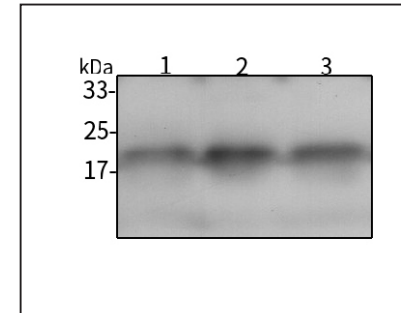
Lane 3: Human HCT116 cell lysate

All lanes: Anti-Cyclophilin A/PPIA at 1:1000 dilution

Lysates/proteins at 20-50 µg per lane.

Predicted band size: 18 kDa

Observed band size: 18 kDa



Western blot-Anti-Cyclophilin A/PPIA pAb

Lane 1: Mouse kidney tissue lysate

Lane 2: Rat colon tissue lysate

Lane 3: Rat lung tissue lysate

All lanes: Anti-Cyclophilin A/PPIA at 1:1000 dilution

Lysates/proteins at 20-50 µg per lane.

Predicted band size: 18 kDa

Observed band size: 18 kDa