

Anti-Mammaglobin A Rabbit pAb



WL04771

For Research Use Only. Not For Use In Diagnostic Procedures

Product Information

Product name	Anti-Mammaglobin A Rabbit pAb	
Source	Rabbit	
Species reactivity	Human, Mouse, Rat	
Tested applications	WB	1:2000
	IF	1:500
Cellular localization	Secreted and Cell membrane	
Pack size	50/100/200/500/1000µl	
Storage	Store at -20°C. Avoid freeze/thaw cycles.	
Storage buffer	Supplied in 20 mM phosphate (pH 7.5), 150 mM NaCl, 100 µg/ml BSA, 50% glycerol and less than 0.02% sodium azide	

General Information

Background SCGB2A2, also known as mammaglobin A, is a member of the secretoglobulin superfamily. Predicted to be involved in androgen receptor signaling pathway. Predicted to be located in extracellular region. Predicted to be active in extracellular space.

Immunogen Polyclonal antibody is produced by immunizing animals with a synthetic peptide of Mammaglobin A.

Purification Polyclonal antibody was purified by Protein A affinity chromatography.

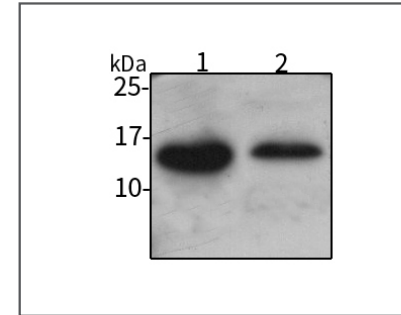
Anti-Mammaglobin A Rabbit pAb



WL04771

For Research Use Only. Not For Use In Diagnostic Procedures

Product Images



Western blot-Anti-Mammaglobin A pAb

Lane 1: Human HeLa cell lysate

Lane 2: Human MBA-MD-231 cell lysate

All lanes: Anti-Mammaglobin A at 1:2000 dilution

Lysates/proteins at 20-50 µg per lane.

Predicted band size: 10 kDa

Observed band size: 13 kDa