

Anti-PCK2 Rabbit pAb



WLR043

For Research Use Only. Not For Use In Diagnostic Procedures

Product Information

Product name	Anti-PCK2 Rabbit pAb	
Source	Rabbit	
Species reactivity	Human, Mouse, Rat	
Tested applications	WB	1:2000
	IF	1:500
Cellular localization	Secreted and Cell membrane	
Pack size	50/100/200/500/1000µl	
Storage	Store at -20°C. Avoid freeze/thaw cycles.	
Storage buffer	Supplied in 20 mM phosphate (pH 7.5), 150 mM NaCl, 100 µg/ml BSA, 50% glycerol and less than 0.02% sodium azide	

General Information

Background PCK2(phosphoenolpyruvate carboxykinase [GTP], mitochondrial) is also named as PEPCK2, PEPCK-M and belongs to the phosphoenolpyruvate carboxykinase [GTP] family. A cytosolic form of this protein is encoded by a different gene and is the key enzyme of gluconeogenesis in the liver.

Immunogen Polyclonal antibody is produced by immunizing animals with a synthetic peptide of PCK2.

Purification Polyclonal antibody was purified by Protein A affinity chromatography.

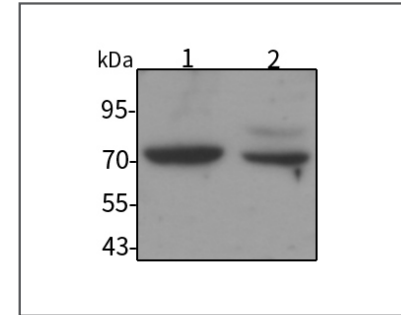
Anti-PCK2 Rabbit pAb



WLR043

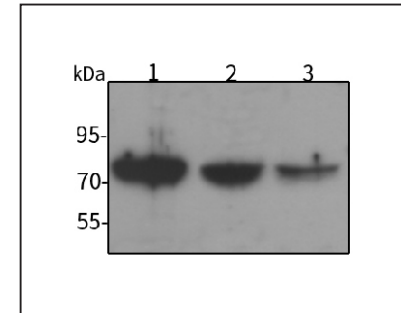
For Research Use Only. Not For Use In Diagnostic Procedures

Product Images



Western blot-Anti-PCK2 pAb

Lane 1: Human HeLa cell lysate
 Lane 2: Human HEK-293 cell lysate
 All lanes: Anti-PCK2 at 1:2000 dilution
 Lysates/proteins at 20-50 µg per lane.
 Predicted band size: 71 kDa
 Observed band size: 71 kDa



Western blot-Anti-PCK2 pAb

Lane 1: Mouse liver tissue lysate
 Lane 2: Mouse kidney tissue lysate
 Lane 3: Rat stomach tissue lysate
 All lanes: Anti-PCK2 at 1:2000 dilution
 Lysates/proteins at 20-50 µg per lane.
 Predicted band size: 71 kDa
 Observed band size: 71 kDa