

Anti-TLR3 Rabbit pAb



WL04770

For Research Use Only. Not For Use In Diagnostic Procedures

Product Information

Product name	Anti-TLR3 Rabbit pAb	
Source	Rabbit	
Species reactivity	Human, Mouse, Rat	
Tested applications	WB	1:1000
	IHC	1:200
	IF	1:200

Cellular localization Secreted and Cell membrane

Pack size 50/100/200/500/1000µl

Storage Store at -20°C. **Avoid freeze/thaw cycles.**

Storage buffer Supplied in 20 mM phosphate (pH 7.5), 150 mM NaCl, 100 µg/ml BSA, 50% glycerol and less than 0.02% sodium azide

General Information

Background TLR3 belongs to the Toll-like receptor family which is important in the innate immune response to pathogens. TLRs are highly conserved from Drosophila to humans and share structural and functional similarities. The various TLRs exhibit different patterns of expression. It recognizes dsRNA associated with viral infection, and induces the activation of NF-kappaB and the production of type I interferons. It thus plays a role in host defense against multiple viruses.

Immunogen Polyclonal antibody is produced by immunizing animals with a synthetic peptide of TLR3.

Purification Polyclonal antibody was purified by immunogen affinity chromatography.

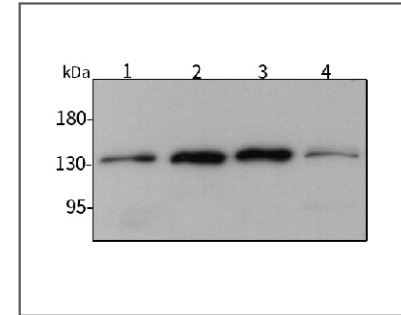
Anti-TLR3 Rabbit pAb



WL04770

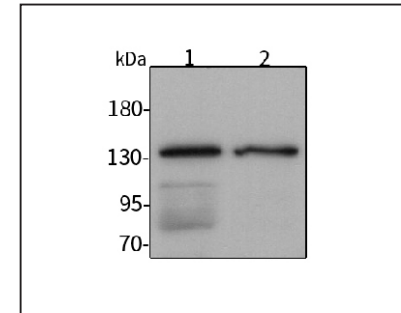
For Research Use Only. Not For Use In Diagnostic Procedures

Product Images



Western blot-Anti-TLR3 pAb

Lane 1: Human HeLa cell lysate
 Lane 1: Human HEK-293 cell lysate
 Lane 1: Human HCT116 cell lysate
 Lane 1: Human MBA-MD-231 cell lysate
 All lanes: Anti-TLR3 at 1:1000 dilution
 Lysates/proteins at 20-50 µg per lane.
 Predicted band size: 108 kDa
 Observed band size: 130 kDa



Western blot-Anti-TLR3 pAb

Lane 1: Mouse colon tissue lysate
 Lane 2: Rat spleen tissue lysate
 All lanes: Anti-TLR3 at 1:1000 dilution
 Lysates/proteins at 20-50 µg per lane.
 Predicted band size: 108 kDa
 Observed band size: 130 kDa