



For Research Use Only. Not For Use In Diagnostic Procedures

Product Information

Product name	Anti-Alkaline Phosphatase/ALPI Rabbit pAb
Source	Rabbit
Species reactivity	Human, Mouse, Rat
Tested applications	WB 1:1000
Cellular localization	Secreted and Cell membrane
Pack size	50/100/200/500/1000µl
Storage	Store at -20°C. Avoid freeze/thaw cycles.
Storage buffer	Supplied in 20 mM phosphate (pH 7.5), 150 mM NaCl, 100 µg/ml BSA, 50% glycerol and less than 0.02% sodium azide

General Information

Background

There are at least four distinct but related alkaline phosphatases: intestinal, placental, placental-like, and liver/bone/kidney (tissue non-specific). The intestinal alkaline phosphatase gene encodes a digestive brush-border enzyme. This enzyme is a component of the gut mucosal defense system and is thought to function in the detoxification of lipopolysaccharide, and in the prevention of bacterial translocation in the gut.

Immunogen

Polyclonal antibody is produced by immunizing animals with a synthetic peptide of Alkaline Phosphatase/ALPI.

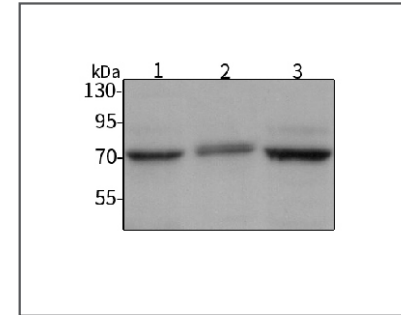
Purification

Polyclonal antibody was purified by immunogen affinity chromatography.



For Research Use Only. Not For Use In Diagnostic Procedures

Product Images



Western blot-Anti-Alkaline Phosphatase/ALPI pAb

Lane 1: Human MDA-MB-231 cell lysate

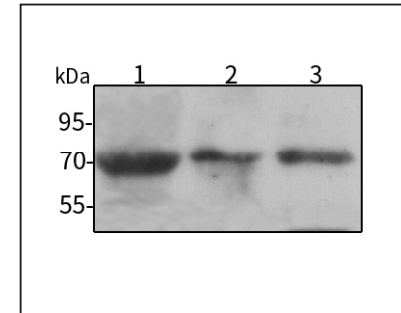
Lane 2: Human A549 cell lysate

Lane 3: Human HUVEC cell lysate

All lanes: Anti-Alkaline Phosphatase/ALPI at 1:1000 dilution
Lysates/proteins at 20-50 µg per lane.

Predicted band size: 56 kDa

Observed band size: 70 kDa



Western blot-Anti-Alkaline Phosphatase/ALPI pAb

Lane 1: Mouse colon tissue lysate

Lane 2: Rat colon tissue lysate

Lane 3: Rat stomach tissue lysate

All lanes: Anti-Alkaline Phosphatase/ALPI at 1:1000 dilution
Lysates/proteins at 20-50 µg per lane.

Predicted band size: 56 kDa

Observed band size: 70 kDa