

Anti-Integrin beta 4 Rabbit pAb



WL02010

For Research Use Only. Not For Use In Diagnostic Procedures

Product Information

Product name	Anti-Integrin beta 4 Rabbit pAb
Source	Rabbit
Species reactivity	Human, Mouse, Rat
Tested applications	WB 1:2000
Cellular localization	Secreted and Cell membrane
Pack size	50/100/200/500/1000µl
Storage	Store at -20°C. Avoid freeze/thaw cycles.
Storage buffer	Supplied in 20 mM phosphate (pH 7.5), 150 mM NaCl, 100 µg/ml BSA, 50% glycerol and less than 0.02% sodium azide

General Information

Background Integrins are cell adhesion receptors that are heterodimers composed of non-covalently associated alpha and beta subunits. Integrin beta-4 pairs with alpha-6, and the heterodimeric integrin alpha-6/beta-4 is a receptor for laminin. Integrin alpha-6/beta-4 plays a critical structural role in the hemidesmosome of epithelial cells, and also plays a role in the invasive and metastatic phenotype of various cancers.

Immunogen Polyclonal antibody is produced by immunizing animals with a synthetic peptide of Integrin beta 4.

Purification Polyclonal antibody was purified by Protein A affinity chromatography.

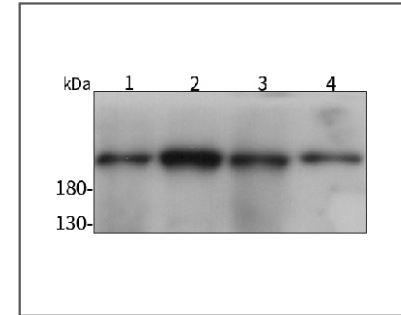
Anti-Integrin beta 4 Rabbit pAb



WL02010

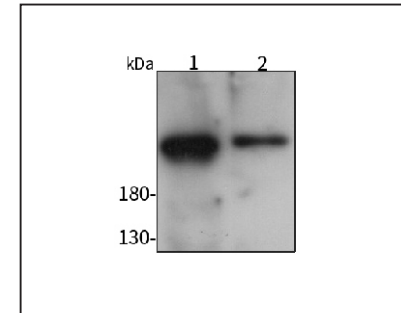
For Research Use Only. Not For Use In Diagnostic Procedures

Product Images



Western blot-Anti-Integrin beta 4 pAb

Lane 1: Human HeLa cell lysate
 Lane 2: Human MCF-7 cell lysate
 Lane 3: Human A549 cell lysate
 Lane 4: Human HUVEC cell lysate
 All lanes: Anti-Integrin beta 4 at 1:2000 dilution
 Lysates/proteins at 20-50 µg per lane.
 Predicted band size: 202 kDa
 Observed band size: 202 kDa



Western blot-Anti-Integrin beta 4 pAb

Lane 1: Mouse spleen tissue lysate
 Lane 2: Mouse kidney tissue lysate
 All lanes: Anti-Integrin beta 4 at 1:2000 dilution
 Lysates/proteins at 20-50 µg per lane.
 Predicted band size: 202 kDa
 Observed band size: 202 kDa