

Anti-SGK Rabbit pAb



WL02741

For Research Use Only. Not For Use In Diagnostic Procedures

Product Information

Product name	Anti-SGK Rabbit pAb		
Source	Rabbit		
Species reactivity	Human, Mouse, Rat		
Tested applications	WB	1:500-1:1000	
	IHC	1:200	
Cellular localization	Secreted and Cell membrane		
Pack size	50/100/200/500/1000 μ l		
Storage	Store at -20°C. Avoid freeze/thaw cycles.		
Storage buffer	Supplied in 20 mM phosphate (pH 7.5), 150 mM NaCl, 100 μ g/ml BSA, 50% glycerol and less than 0.02% sodium azide		

General Information

Background	Serum- and glucocorticoid-regulated kinase (SGK), also known as SGK1, is a serine/threonine protein kinase and a member of the "AGC" subfamily, which includes protein kinases A, G, and C. SGK plays an important role in activating certain potassium, sodium, and chloride channels, suggesting its involvement in the regulation of processes such as cell survival, neuronal excitability, and renal sodium excretion. SGK is rapidly induced in response to a variety of stimuli, including serum, glucocorticoid, follicle stimulating hormone, osmotic shock, and mineralocorticoids. SGK is also a component of the p38 MAPK-mediated response to hyperosmotic stress. In addition to its membrane channel and carrier functions, SGK1 also regulates a broad range of targets, such as GSK-3, NEDD4, iNOS, AMPAR, PSD95, Tau, NF- κ B, CREB, and FKHR-L1. Polyclonal antibody is produced by immunizing animals with a synthetic peptide of SGK.
Immunogen	
Purification	Polyclonal antibody was purified by immunogen affinity chromatography.

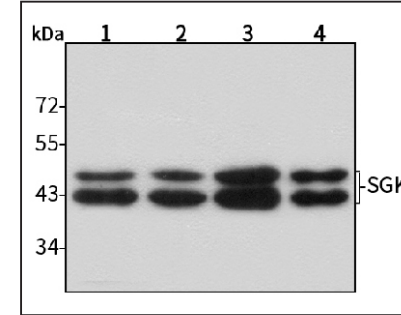
Anti-SGK Rabbit pAb



WL02741

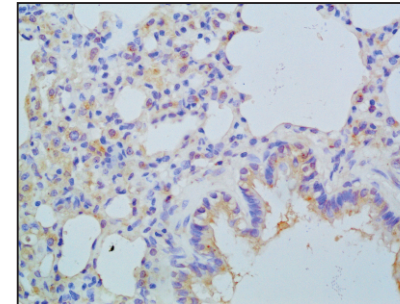
For Research Use Only. Not For Use In Diagnostic Procedures

Product Images



Western blot-Anti-SGK pAb

Lane 1: Human HepG2 cell lysate
 Lane 2: Human Hela cell lysate
 Lane 3: Human BGC-823 cell lysate
 Lane 4: Human MGC-803 cell lysate
 All lanes: Anti-SGK at 1:1000 dilution
 Lysates/proteins at 20-50 μ g per lane.
 Predicted band size: 49 kDa
 Observed band size: 42 kDa



Immunohistochemistry-Anti-SGK pAb

Immunohistochemical analysis of paraffin-embedded rat lung using anti-SGK Rabbit Antibody at 1:200 dilution.
 Perform heat mediated antigen retrieval with Tris-EDTA buffer pH 9.0