

Anti-VAMP1 Rabbit pAb



WL00328

For Research Use Only. Not For Use In Diagnostic Procedures

Product Information

Product name	Anti-VAMP1 Rabbit pAb
Source	Rabbit
Species reactivity	Human, Mouse, Rat
Tested applications	WB 1:2000
Cellular localization	Secreted and Cell membrane
Pack size	50/100/200/500/1000µl
Storage	Store at -20°C. Avoid freeze/thaw cycles.
Storage buffer	Supplied in 20 mM phosphate (pH 7.5), 150 mM NaCl, 100 µg/ml BSA, 50% glycerol and less than 0.02% sodium azide

General Information

Background

VAMP1, also named as synaptobrevin 1, is a member of the vesicle-associated membrane protein (VAMP)/synaptobrevin family. VAMP1 is a part of the SNARE (soluble NSF-attachment protein receptor) complex. Synaptobrevins, syntaxins, and the synaptosomal-associated protein SNAP25 are the main components of a protein complex involved in the docking and/or fusion of synaptic vesicles with the presynaptic membrane.

Immunogen

Polyclonal antibody is produced by immunizing animals with a synthetic peptide of VAMP1.

Purification

Polyclonal antibody was purified by Protein A affinity chromatography.

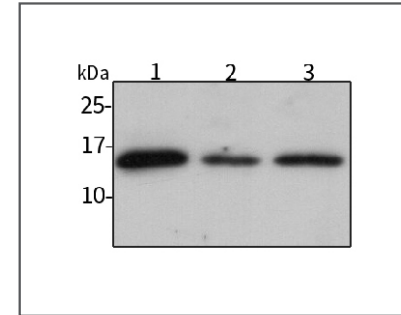
Anti-VAMP1 Rabbit pAb



WL00328

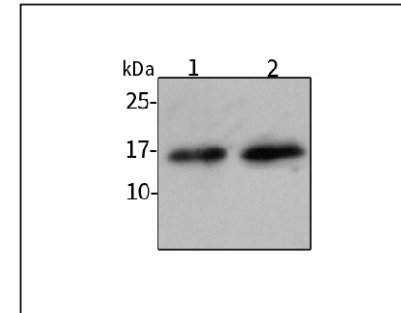
For Research Use Only. Not For Use In Diagnostic Procedures

Product Images



Western blot-Anti-VAMP1 pAb

Lane 1: Human HeLa cell lysate
 Lane 2: Human HEK-293 cell lysate
 Lane 3: Human A549 cell lysate
 All lanes: Anti-VAMP1 at 1:2000 dilution
 Lysates/proteins at 20-50 µg per lane.
 Predicted band size: 13 kDa
 Observed band size: 16 kDa



Western blot-Anti-VAMP1 pAb

Lane 1: Mouse liver tissue lysate
 Lane 2: Rat spleen tissue lysate
 All lanes: Anti-VAMP1 at 1:2000 dilution
 Lysates/proteins at 20-50 µg per lane.
 Predicted band size: 13 kDa
 Observed band size: 16 kDa