

## Anti-M6PR Rabbit pAb



WL02758

For Research Use Only. Not For Use In Diagnostic Procedures

## Product Information

<b>Product name</b>	Anti-M6PR Rabbit pAb	
<b>Source</b>	Rabbit	
<b>Species reactivity</b>	Human, Mouse, Rat	
<b>Tested applications</b>	WB	1:1000-1:2000
	IHC	1:100-1:400
	IF	1:500
<b>Cellular localization</b>	Secreted and Cell membrane	
<b>Pack size</b>	50/100/200/500/1000µl	
<b>Storage</b>	Store at -20°C. <b>Avoid freeze/thaw cycles.</b>	
<b>Storage buffer</b>	Supplied in 20 mM phosphate (pH 7.5), 150 mM NaCl, 100 µg/ml BSA, 50% glycerol and less than 0.02% sodium azide	

## General Information

## Background

Insulin-like growth factor 2 (IGF-2) receptor, also widely known as M6PR, is a multifunctional type I transmembrane glycoprotein that participates in the internalization of mannose-6-phosphate modified hydrolases and IGF-2 from the plasma membrane. M6PR functions to clear IGF2 from the cell surface to attenuate signalling, and to transport lysosomal acid hydrolase precursors from the Golgi apparatus to the lysosome. After binding IGF2 at the cell surface, M6PRs accumulate in forming clathrin-coated vesicles and are internalized. In the lumen of the trans-Golgi network, the M6PR binds M6P-tagged cargo. In several research studies, M6PR has been recognized as a tumor suppressor in a number of cancers.

## Immunogen

Polyclonal antibody is produced by immunizing animals with a synthetic peptide of M6PR.

## Purification

Polyclonal antibody was purified by Protein A affinity chromatography.

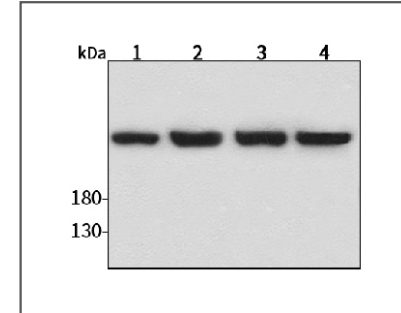
## Anti-M6PR Rabbit pAb



WL02758

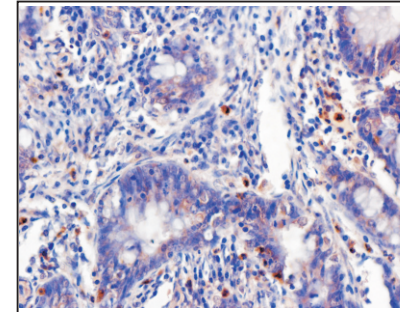
For Research Use Only. Not For Use In Diagnostic Procedures

## Product Images



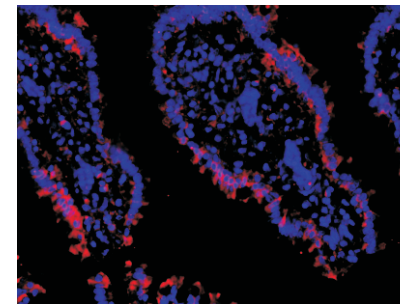
## Western blot-Anti-M6PR pAb

Lane 1: Human HepG2 cell lysate  
 Lane 2: Human Hela cell lysate  
 Lane 3: Human BGC-823 cell lysate  
 Lane 4: Human MGC-803 cell lysate  
 All lanes: Anti-M6PR at 1:1000 dilution  
 Lysates/proteins at 20-50 µg per lane.  
 Predicted band size: 274 kDa  
 Observed band size: 274 kDa



## Immunohistochemistry-Anti-M6PR pAb

Immunohistochemical analysis of paraffin-embedded human colon cancer using anti-M6PR Rabbit Antibody at 1:200 dilution.  
 Perform heat mediated antigen retrieval with Tris-EDTA buffer pH 9.0



## Immunofluorescence-Anti-M6PR pAb

Immunofluorescence analysis of paraffin-embedded rat colon using anti-M6PR Rabbit Antibody at 1:200 dilution.  
 Perform heat mediated antigen retrieval with Tris-EDTA buffer pH 9.0