

Anti-ELK1 Rabbit pAb



WL04797

For Research Use Only. Not For Use In Diagnostic Procedures

Product Information

Product name	Anti-ELK1 Rabbit pAb
Source	Rabbit
Species reactivity	Human, Mouse, Rat
Tested applications	WB 1:2000
Cellular localization	Secreted and Cell membrane
Pack size	50/100/200/500/1000µl
Storage	Store at -20°C. Avoid freeze/thaw cycles.
Storage buffer	Supplied in 20 mM phosphate (pH 7.5), 150 mM NaCl, 100 µg/ml BSA, 50% glycerol and less than 0.02% sodium azide

General Information

Background Proteins of the TCF subfamily form a ternary complex by binding to the the serum response factor and the serum response element in the promoter of the c-fos proto-oncogene. The protein encoded by this gene is a nuclear target for the ras-raf-MAPK signaling cascade. This gene produces multiple isoforms by using alternative translational start codons and by alternative splicing.

Immunogen Polyclonal antibody is produced by immunizing animals with a synthetic peptide of ELK1.

Purification Polyclonal antibody was purified by Protein A affinity chromatography.

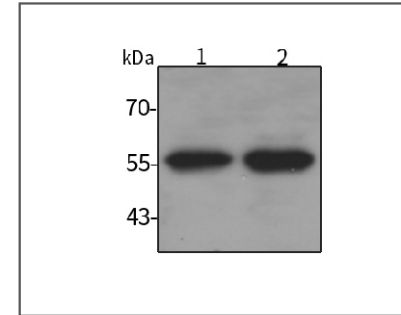
Anti-ELK1 Rabbit pAb



WL04797

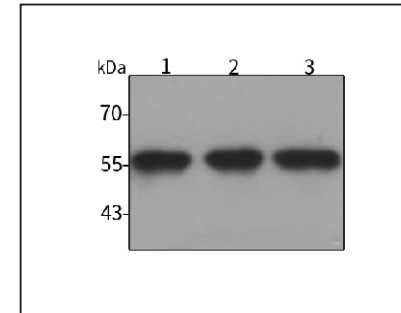
For Research Use Only. Not For Use In Diagnostic Procedures

Product Images



Western blot-Anti-ELK1 pAb

Lane 1: Human Hela cell lysate
 Lane 2: Human HEK-293 cell lysate
 All lanes: Anti-ELK1 at 1:2000 dilution
 Lysates/proteins at 20-50 µg per lane.
 Predicted band size: 45 kDa
 Observed band size: 55 kDa



Western blot-Anti-ELK1 pAb

Lane 1: Mouse brain tissue lysate
 Lane 2: Mouse small intestine tissue lysate
 Lane 3: Rat stomach tissue lysate
 All lanes: Anti-ELK1 at 1:2000 dilution
 Lysates/proteins at 20-50 µg per lane.
 Predicted band size: 45 kDa
 Observed band size: 55 kDa