

Anti-ABCA1 Rabbit pAb



WL06338

For Research Use Only. Not For Use In Diagnostic Procedures

Product Information

Product name	Anti-ABCA1 Rabbit pAb
Source	Rabbit
Species reactivity	Human, Mouse, Rat
Tested applications	WB 1:2000
Cellular localization	Secreted and Cell membrane
Pack size	50/100/200/500/1000µl
Storage	Store at -20°C. Avoid freeze/thaw cycles.
Storage buffer	Supplied in 20 mM phosphate (pH 7.5), 150 mM NaCl, 100 µg/ml BSA, 50% glycerol and less than 0.02% sodium azide

General Information

Background

The membrane-associated protein encoded by this gene is a member of the superfamily of ATP-binding cassette (ABC) transporters. ABC proteins transport various molecules across extra- and intracellular membranes. This protein is a member of the ABCA subfamily. Members of the ABCA subfamily comprise the only major ABC subfamily found exclusively in multicellular eukaryotes. With cholesterol as its substrate, this protein functions as a cholesterol efflux pump in the cellular lipid removal pathway.

Immunogen

Polyclonal antibody is produced by immunizing animals with a synthetic peptide of ABCA1.

Purification

Polyclonal antibody was purified by Protein A affinity chromatography.

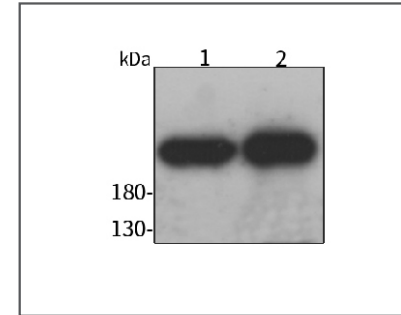
Anti-ABCA1 Rabbit pAb



WL06338

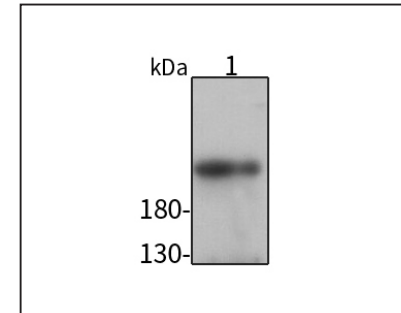
For Research Use Only. Not For Use In Diagnostic Procedures

Product Images



Western blot-Anti-ABCA1 pAb

Lane 1: Human HeLa cell lysate
 Lane 2: Human HEK-293 cell lysate
 All lanes: Anti-ABCA1 at 1:2000 dilution
 Lysates/proteins at 20-50 µg per lane.
 Predicted band size: 254 kDa
 Observed band size: 254 kDa



Western blot-Anti-ABCA1 pAb

Lane 1: Mouse brain tissue lysate
 All lanes: Anti-ABCA1 at 1:2000 dilution
 Lysates/proteins at 20-50 µg per lane.
 Predicted band size: 254 kDa
 Observed band size: 254 kDa