

## Anti- Villin Rabbit pAb



WL04873

For Research Use Only. Not For Use In Diagnostic Procedures

## Product Information

<b>Product name</b>	Anti- Villin Rabbit pAb	
<b>Source</b>	Rabbit	
<b>Species reactivity</b>	Human, Mouse, Rat	
<b>Tested applications</b>	WB	1:1000
	IHC	1:200
	IF	1:200

**Cellular localization** Cytoplasm , cytoskeleton

**Pack size** 50/100/200/500/1000µl

**Storage** Store at -20°C. **Avoid freeze/thaw cycles.**

**Storage buffer** Supplied in 20 mM phosphate (pH 7.5), 150 mM NaCl, 100 µg/ml BSA, 50% glycerol and less than 0.02% sodium azide

## General Information

**Background** This gene encodes a member of a family of calcium-regulated actin-binding proteins. This protein represents a dominant part of the brush border cytoskeleton which functions in the capping, severing, and bundling of actin filaments. Two mRNAs of 2.7 kb and 3.5 kb have been observed; they result from utilization of alternate poly-adenylation signals present in the terminal exon.

**Immunogen** Polyclonal antibody is produced by immunizing animals with a synthetic peptide of Villin.

**Purification** Polyclonal antibody was purified by immunogen affinity chromatography.

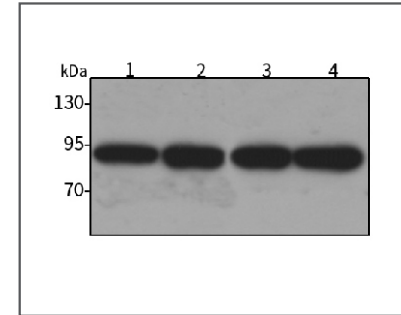
## Anti- Villin Rabbit pAb



WL04873

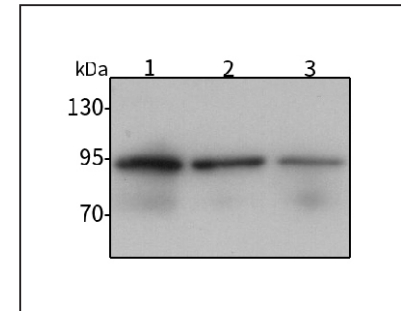
For Research Use Only. Not For Use In Diagnostic Procedures

## Product Images



## Western blot-Anti- Villin pAb

Lane 1: Human HeLa cell lysate  
 Lane 2: Human HEK-293 cell lysate  
 Lane 3: Human MBA-MD-231 cell lysate  
 Lane 4: Human A549 cell lysate  
 All lanes: Anti- Villin at 1:1000 dilution  
 Lysates/proteins at 20-50 µg per lane.  
 Predicted band size: 93 kDa  
 Observed band size: 93 kDa



## Western blot-Anti- Villin pAb

Lane 1: Mouse small intestine tissue lysate  
 Lane 2: Rat colon tissue lysate  
 Lane 3: Rat kidney tissue lysate  
 All lanes: Anti- Villin at 1:2000 dilution  
 Lysates/proteins at 20-50 µg per lane.  
 Predicted band size: 93 kDa  
 Observed band size: 93 kDa