

## Anti-CD54/ICAM1 Rabbit pAb



WL02268

For Research Use Only. Not For Use In Diagnostic Procedures

## Product Information

<b>Product name</b>	Anti-CD54/ICAM1 Rabbit pAb	
<b>Source</b>	Rabbit	
<b>Species reactivity</b>	Human, Mouse, Rat	
<b>Tested applications</b>	WB	1:1000-1:2000
	IHC	1:50-1:100
<b>Cellular localization</b>	Membrane	
<b>Pack size</b>	50/100/200/500/1000µl	
<b>Storage</b>	Store at -20°C. <b>Avoid freeze/thaw cycles.</b>	
<b>Storage buffer</b>	Supplied in 20 mM phosphate (pH 7.5), 150 mM NaCl, 100 µg/ml BSA, 50% glycerol and less than 0.02% sodium azide	

## General Information

## Background

Cell adhesion molecules (CAMs) are a family of closely related cell surface glycoproteins involved in cell-cell interactions during growth and are thought to play important, yet separate, roles in embryogenesis and development. The intracellular adhesion molecule-1 (ICAM1), also referred to as CD54, is a cell surface glycoprotein that belongs to the immunoglobulin superfamily (IgSF) of adhesion molecules. CD54 is expressed at low levels in diverse cell types, and is induced by cytokines (TNF- $\alpha$ , interleukin-1) and bacterial lipopolysaccharide. Apical localization of CD54 on endothelial cells (or basolateral localization on epithelial cells) is a prerequisite for leukocyte trafficking through the endothelial (or epithelial) barrier. Apical expression of CD54 on epithelial cells mediates pathogen invasion as well as host defense, a pattern also observed in tumors.

## Immunogen

Polyclonal antibody is produced by immunizing animals with a synthetic peptide of CD54/ICAM1.

## Purification

Polyclonal antibody was purified by Protein A affinity chromatography.

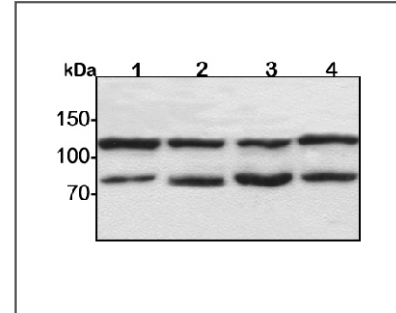
## Anti-CD54/ICAM1 Rabbit pAb



WL02268

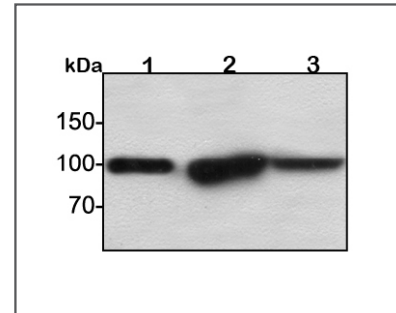
For Research Use Only. Not For Use In Diagnostic Procedures

## Product Images



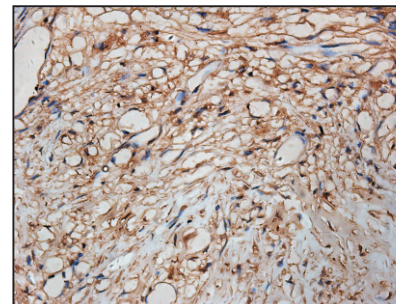
## Western blot-Anti-CD54/ICAM1 pAb

Lane 1: Human BGC-823 cell lysate  
 Lane 2: Human MGC-803 cell lysate  
 Lane 3: Human SGC-7901 cell lysate  
 Lane 4: Human MCF-7 cell lysate  
 All lanes: Anti-CD54/ICAM1 at 1:1000 dilution  
 Lysates/proteins at 20-50 µg per lane.  
 Predicted band size: 57 kDa  
 Observed band size: 85-110 kDa



## Western blot-Anti-CD54/ICAM1 pAb

Lane 1: Mouse kidney tissue lysate  
 Lane 2: Mouse heart tissue lysate  
 Lane 3: Rat liver tissue lysate  
 All lanes: Anti-CD54/ICAM1 at 1:1000 dilution  
 Lysates/proteins at 20-50 µg per lane.  
 Predicted band size: 57 kDa  
 Observed band size: 85-110 kDa



## Immunohistochemistry-Anti-CD54/ICAM1 pAb

Immunohistochemical analysis of paraffin-embedded human breast cancer using anti-CD54/ICAM1 Rabbit Antibody at 1:100 dilution. Perform heat mediated antigen retrieval with Tris-EDTA buffer pH 9.0

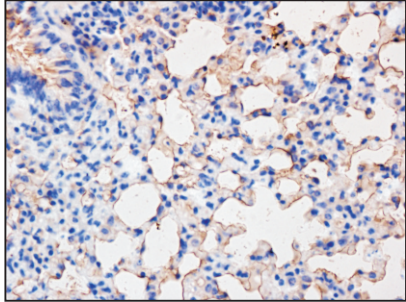
## Anti-CD54/ICAM1 Rabbit pAb



WL02268

For Research Use Only. Not For Use In Diagnostic Procedures

### Product Information



#### Immunohistochemistry-Anti-CD54/ICAM1 pAb

Immunohistochemical analysis of paraffin-embedded mouse lung using anti-CD54/ICAM1 Rabbit Antibody at 1:100 dilution.

Perform heat mediated antigen retrieval with Tris-EDTA buffer pH 9.0