

Anti-Cyclin E Rabbit pAb



WL01072

For Research Use Only. Not For Use In Diagnostic Procedures

Product Information

Product name	Anti-Cyclin E Rabbit pAb	
Source	Rabbit	
Species reactivity	Human, Mouse, Rat	
Tested applications	WB	1:500-1:1000
	IHC	1:150
Cellular localization	Nucleus	
Pack size	50/100/200/500/1000μl	
Storage	Store at -20°C. Avoid freeze/thaw cycles.	
Storage buffer	Supplied in 20 mM phosphate (pH 7.5), 150 mM NaCl, 100 μg/ml	
	BSA, 50% glycerol and less than 0.02% sodium azide	

General Information

Background	The protein encoded by Cyclin E belongs to the highly conserved cyclin family, whose members are characterized by a dramatic periodicity in protein abundance through the cell cycle. Cyclins function as regulators of CDK kinases. Cyclin E, along with the three cyclin D proteins and cyclin C, has been shown to represent a putative G1 cyclin on the basis of its cyclic pattern of mRNA expression, with maximal levels being detected near the G1/S boundary. Cyclin E is phosphorylated at multiple sites in vivo including Thr62, Ser88, Ser72, Thr380 and Ser384, and is controlled by at least two kinases, CDK2 and GSK-3.
Immunogen	Polyclonal antibody is produced by immunizing animals with a synthetic peptide of Cyclin E.
Purification	Polyclonal antibody was purified by immunogen affinity chromatography.

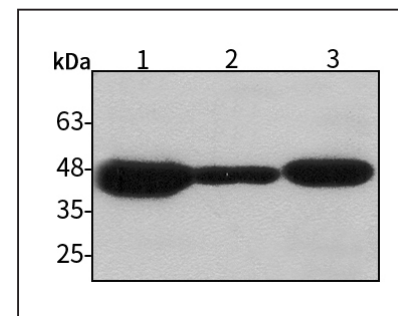
Anti-Cyclin E Rabbit pAb



WL01072

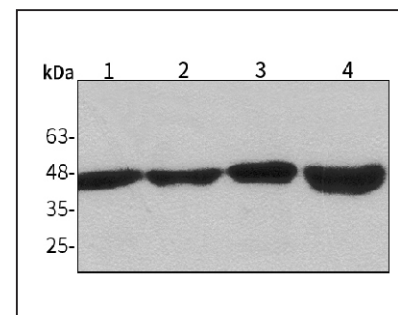
For Research Use Only. Not For Use In Diagnostic Procedures

Product Images



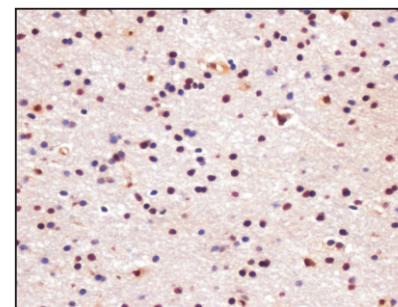
Western blot-Anti-Cyclin E pAb

Lane 1: Human MGC-803 cell lysate
 Lane 2: Human SGC-7901 cell lysate
 Lane 3: Human MCF-7 cell lysate
 All lanes: Anti-Cyclin E at 1:1000 dilution
 Lysates/proteins at 20-50 μg per lane.
 Predicted band size: 47 kDa
 Observed band size: 47 kDa



Western blot-Anti-Cyclin E pAb

Lane 1: Mouse stomach tissue lysate
 Lane 2: Mouse kidney tissue lysate
 Lane 3: Rat liver tissue lysate
 Lane 4: Rat heart tissue lysate
 All lanes: Anti-Cyclin E at 1:1000 dilution
 Lysates/proteins at 20-50 μg per lane.
 Predicted band size: 47 kDa
 Observed band size: 47 kDa



Immunohistochemistry-Anti-Cyclin E pAb

Immunohistochemical analysis of paraffin-embedded human brain using anti-Cyclin E Rabbit Antibody at 1:150 dilution.
 Perform heat mediated antigen retrieval with Tris-EDTA buffer pH 9.0

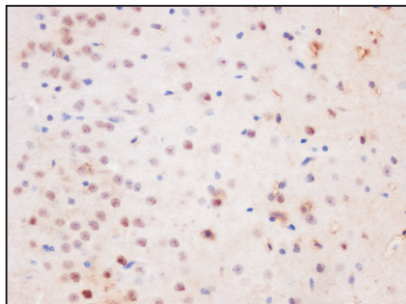
Anti-Cyclin E Rabbit pAb



WL01072

For Research Use Only. Not For Use In Diagnostic Procedures

Product Information



Immunohistochemistry-Anti-Cyclin E pAb

Immunohistochemical analysis of paraffin-embedded rat brain using anti-Cyclin E Rabbit Antibody at 1:150 dilution.

Perform heat mediated antigen retrieval with Tris-EDTA buffer pH 9.0