

## Anti-BRCA2 Rabbit pAb



WL02438

For Research Use Only. Not For Use In Diagnostic Procedures

## Product Information

<b>Product name</b>	Anti-BRCA2 Rabbit pAb	
<b>Source</b>	Rabbit	
<b>Species reactivity</b>	Human	
<b>Tested applications</b>	WB	1:1000-1:2000
	IHC	1:500
	IF	1:500
<b>Cellular localization</b>	Cytoplasm, cytoskeleton, Nucleus	
<b>Pack size</b>	50/100/200/500/1000µl	
<b>Storage</b>	Store at -20°C. <b>Avoid freeze/thaw cycles.</b>	
<b>Storage buffer</b>	Supplied in 20 mM phosphate (pH 7.5), 150 mM NaCl, 100 µg/ml BSA, 50% glycerol and less than 0.02% sodium azide	

## General Information

**Background**

The breast cancer susceptibility proteins BRCA1 and BRCA2 are frequently mutated in cases of hereditary breast and ovarian cancers and have roles in multiple processes related to DNA damage, repair, cell cycle progression, transcription, ubiquitination, and apoptosis. The BRCA2 protein contains several copies of a 70 aa motif called the BRC motif, and these motifs mediate binding to the RAD51 recombinase which functions in DNA repair. BRCA2 is considered a tumor suppressor gene, as tumors with BRCA2 mutations generally exhibit loss of heterozygosity (LOH) of the wild-type allele.

**Immunogen**

Polyclonal antibody is produced by immunizing animals with a synthetic peptide of BRCA2.

**Purification**

Polyclonal antibody was purified by Protein A affinity chromatography.

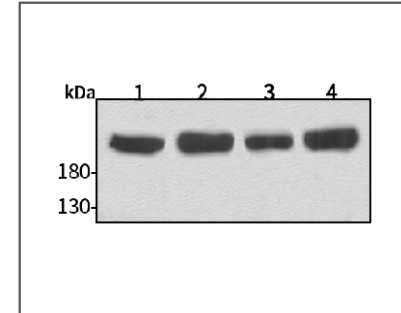
## Anti-BRCA2 Rabbit pAb



WL02438

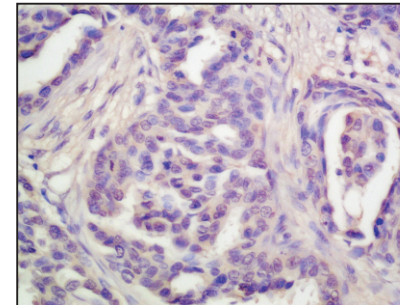
For Research Use Only. Not For Use In Diagnostic Procedures

## Product Images



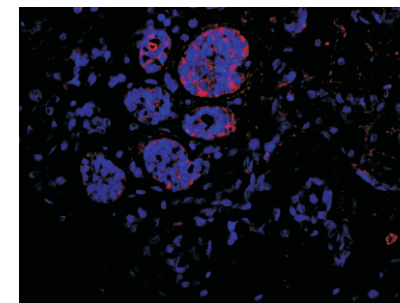
## Western blot-Anti-BRCA2 pAb

Lane 1: Human HepG2 cell lysate  
 Lane 2: Human HeLa cell lysate  
 Lane 3: Human BGC-823 cell lysate  
 Lane 4: Human MGC-803 cell lysate  
 All lanes: Anti-BRCA2 at 1:1000 dilution  
 Lysates/proteins at 20-50 µg per lane.  
 Predicted band size: 384 kDa  
 Observed band size: 384 kDa



## Immunohistochemistry-Anti-BRCA2 pAb

Immunohistochemical analysis of paraffin-embedded human breast cancer using anti-BRCA2 Rabbit Antibody at 1:500 dilution. Perform heat mediated antigen retrieval with Tris-EDTA buffer pH 9.0



## Immunofluorescence-Anti-BRCA2 pAb

Immunofluorescence analysis of paraffin-embedded human breast cancer using anti-BRCA2 Rabbit Antibody at 1:500 dilution. Perform heat mediated antigen retrieval with Tris-EDTA buffer pH 9.0