

## Anti-Glut4 Rabbit pAb



WL02425

For Research Use Only. Not For Use In Diagnostic Procedures

## Product Information

<b>Product name</b>	Anti-Glut4 Rabbit pAb		
<b>Source</b>	Rabbit		
<b>Species reactivity</b>	Human, Mouse, Rat		
<b>Tested applications</b>	WB	1:500-1:1000	
	IHC	1:100	
<b>Cellular localization</b>	Cell membrane, Endomembrane system, Cytoplasm, perinuclear region		
<b>Pack size</b>	50/100/200/500/1000µl		
<b>Storage</b>	Store at -20°C. <b>Avoid freeze/thaw cycles.</b>		
<b>Storage buffer</b>	Supplied in 20 mM phosphate (pH 7.5), 150 mM NaCl, 100 µg/ml BSA, 50% glycerol and less than 0.02% sodium azide		

## General Information

<b>Background</b>	Glucose is fundamental to the metabolism of mammalian cells. Its passage across cell membranes is mediated by a family of transporters termed glucose transporters or Gluts. A group of related glucose transporters (Glut1-5 and 7) mediate the facilitated diffusion of glucose in nonepithelial mammalian tissues. Within insulin-responsive tissues such as muscle and fat, Glut1 contributes to basal glucose uptake while Glut4 is responsible for insulin-stimulated glucose transport. Glut4 is a 12-transmembrane domain protein that facilitates glucose transport in the direction of the glucose gradient. This transporter localizes to intracellular organelles (endosomes) in unstimulated cells and translocates to the cell surface following insulin stimulation.
<b>Immunogen</b>	Polyclonal antibody is produced by immunizing animals with a synthetic peptide of Glut4.
<b>Purification</b>	Polyclonal antibody was purified by immunogen affinity chromatography.

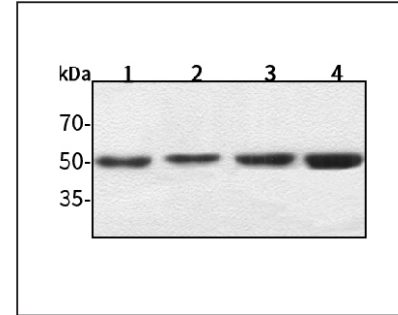
## Anti-Glut4 Rabbit pAb



WL02425

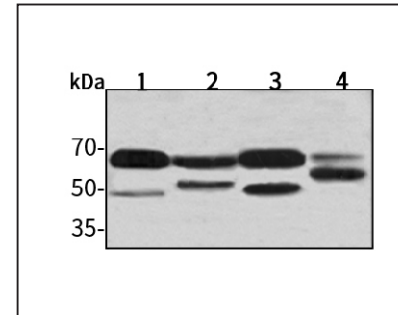
For Research Use Only. Not For Use In Diagnostic Procedures

## Product Images



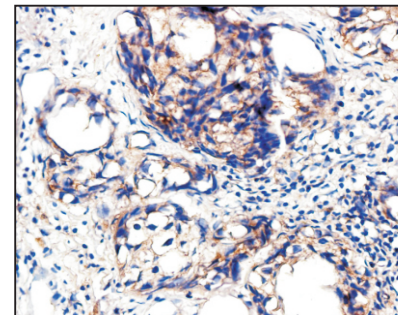
## Western blot-Anti-Glut4 pAb

Lane 1: Human HepG2 cell lysate  
 Lane 2: Human Hela cell lysate  
 Lane 3: Human BGC-823 cell lysate  
 Lane 4: Human MGC-803 cell lysate  
 All lanes: Anti-Glut4 at 1:1000 dilution  
 Lysates/proteins at 20-50 µg per lane.  
 Predicted band size: 55 kDa  
 Observed band size: 50-63 kDa



## Western blot-Anti-Glut4 pAb

Lane 1: Mouse stomach tissue lysate  
 Lane 2: Mouse heart tissue lysate  
 Lane 3: Rat liver tissue lysate  
 Lane 4: Rat brain tissue lysate  
 All lanes: Anti-Glut4 at 1:1000 dilution  
 Lysates/proteins at 20-50 µg per lane.  
 Predicted band size: 55 kDa  
 Observed band size: 50-63 kDa



## Immunohistochemistry-Anti-Glut4 pAb

Immunohistochemical analysis of paraffin-embedded human breast cancer using anti-Glut4 Rabbit Antibody at 1:100 dilution. Perform heat mediated antigen retrieval with Tris-EDTA buffer pH 9.0

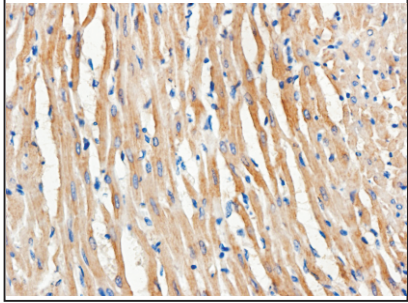
## Anti-Glut4 Rabbit pAb



WL02425

For Research Use Only. Not For Use In Diagnostic Procedures

### Product Information



#### Immunohistochemistry-Anti-Glut4 pAb

Immunohistochemical analysis of paraffin-embedded mouse heart using anti-Glut4 Rabbit Antibody at 1:100 dilution.

Perform heat mediated antigen retrieval with Tris-EDTA buffer pH 9.0