

Anti-PBP/PEBP1 Rabbit pAb



WL03223

For Research Use Only. Not For Use In Diagnostic Procedures

Product Information

Product name	Anti-PBP/PEBP1 Rabbit pAb	
Source	Rabbit	
Species reactivity	Human, Mouse, Rat	
Tested applications	WB	1:500-1:1000
	IF	1:200
Cellular localization	Cytoplasm	
Pack size	50/100/200/500/1000 μ l	
Storage	Store at -20°C. Avoid freeze/thaw cycles.	
Storage buffer	Supplied in 20 mM phosphate (pH 7.5), 150 mM NaCl, 100 μ g/ml BSA, 50% glycerol and less than 0.02% sodium azide	

General Information

Background

The platelet basic protein (PBP), a member of the α -chemokine family, resides in the α -granules of platelets and is released upon their activation. PBP has been shown to form a complex with Raf-1, MEK, and Erk. Thus, PBP competitively disrupts the Raf-1-MEK complex and effectively terminates signal transmission from Raf-1 to MAP kinases. Proteolytic cleavage of the amino-terminus of PBP leads to the generation of several peptides, which include mature PBP, connective tissue-activating peptide-III (CTAP-III, also designated low affinity platelet factor IV (LA-PF4)), β thromboglobulin (β TG) and neutrophil activating peptide-2 (NAP-2). PBP and its N-truncated derivatives mediate inflammation and wound healing.

Immunogen

Polyclonal antibody is produced by immunizing animals with recombinant protein of PBP/PEBP1.

Purification

Polyclonal antibody was purified by immunogen affinity chromatography.

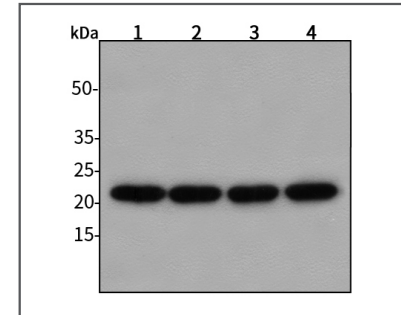
Anti-PBP/PEBP1 Rabbit pAb



WL03223

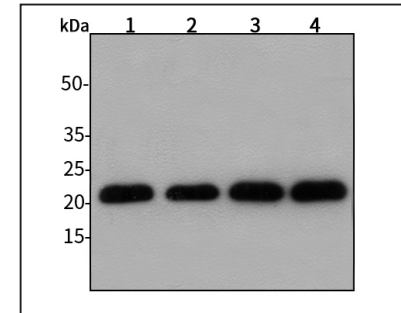
For Research Use Only. Not For Use In Diagnostic Procedures

Product Images



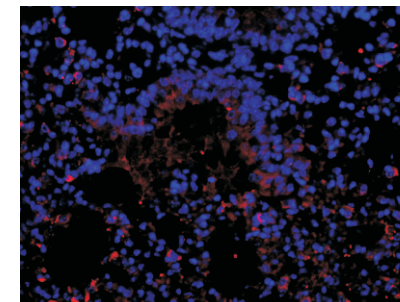
Western blot-Anti-PBP/PEBP1 pAb

Lane 1: Human HepG2 cell lysate
 Lane 2: Human Hela cell lysate
 Lane 3: Human BGC-823 cell lysate
 Lane 4: Human MGC-803 cell lysate
 All lanes: Anti-PBP/PEBP1 at 1:1000 dilution
 Lysates/proteins at 20-50 μ g per lane.
 Predicted band size: 21 kDa
 Observed band size: 21 kDa



Western blot-Anti-PBP/PEBP1 pAb

Lane 1: Mouse kidney tissue lysate
 Lane 2: Mouse heart tissue lysate
 Lane 3: Rat lung tissue lysate
 Lane 4: Rat stomach tissue lysate
 All lanes: Anti-PBP/PEBP1 at 1:1000 dilution
 Lysates/proteins at 20-50 μ g per lane.
 Predicted band size: 21 kDa
 Observed band size: 21 kDa



Immunofluorescence-Anti-PBP/PEBP1 pAb

Immunofluorescence analysis of paraffin-embedded mouse lung using anti-PBP/PEBP1 Rabbit Antibody at 1:200 dilution.
 Perform heat mediated antigen retrieval with Tris-EDTA buffer pH 9.0

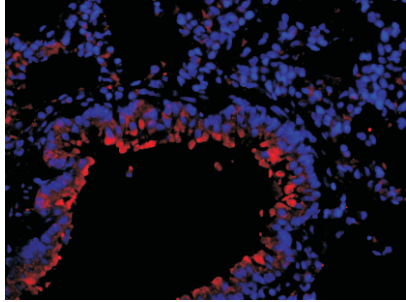
Anti-PBP/PEBP1 Rabbit pAb



WL03223

For Research Use Only. Not For Use In Diagnostic Procedures

Product Information



Immunofluorescence-Anti-PBP/PEBP1 pAb

Immunofluorescence analysis of paraffin-embedded rat lung using anti-PBP/PEBP1 Rabbit Antibody at 1:200 dilution.

Perform heat mediated antigen retrieval with Tris-EDTA buffer pH 9.0

Polyclonal antibody was purified by immunogen affinity chromatography.