

## Anti-NeuroD1 Rabbit pAb



WL02498

For Research Use Only. Not For Use In Diagnostic Procedures

## Product Information

<b>Product name</b>	Anti-NeuroD1 Rabbit pAb	
<b>Source</b>	Rabbit	
<b>Species reactivity</b>	Human, Mouse, Rat	
<b>Tested applications</b>	WB	1:500-1:1000
	IHC	1:400
<b>Cellular localization</b>	Cytoplasm. Nucleus	
<b>Pack size</b>	50/100/200/500/1000 $\mu$ l	
<b>Storage</b>	Store at -20°C. <b>Avoid freeze/thaw cycles.</b>	
<b>Storage buffer</b>	Supplied in 20 mM phosphate (pH 7.5), 150 mM NaCl, 100 $\mu$ g/ml BSA, 50% glycerol and less than 0.02% sodium azide	

## General Information

**Background**

NeuroD is a member of the basic helix-loop-helix (bHLH) family of transcription factors. Acts as a transcriptional activator: mediates transcriptional activation by binding to E box-containing promoter consensus core sequences 5'-CANNTG-3'. NeuroD is also phosphorylated at Ser274 though the results are context dependent as phosphorylation by Erk stimulates NeuroD activity in pancreatic  $\beta$ -cells while phosphorylation by GSK-3 $\beta$  inhibits NeuroD in neurons. Also required for dendrite morphogenesis and maintenance in the cerebellar cortex. Associates with chromatin to enhancer regulatory elements in genes encoding key transcriptional regulators of neurogenesis.

**Immunogen**

Polyclonal antibody is produced by immunizing animals with a synthetic peptide of NeuroD1.

**Purification**

Polyclonal antibody was purified by immunogen affinity chromatography.

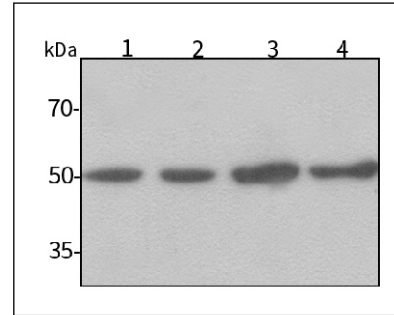
## Anti-NeuroD1 Rabbit pAb



WL02498

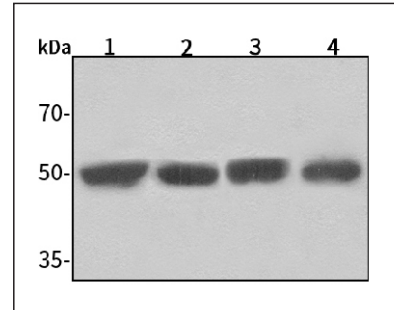
For Research Use Only. Not For Use In Diagnostic Procedures

## Product Images



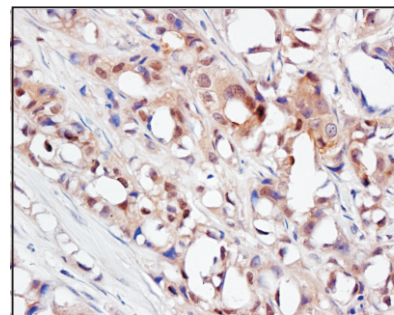
## Western blot-Anti-NeuroD1 pAb

Lane 1: Human HepG2 cell lysate  
 Lane 2: Human Hela cell lysate  
 Lane 3: Human BGC-823 cell lysate  
 Lane 4: Human MGC-803 cell lysate  
 All lanes: Anti-NeuroD1 at 1:1000 dilution  
 Lysates/proteins at 20-50  $\mu$ g per lane.  
 Predicted band size: 40 kDa  
 Observed band size: 49 kDa



## Western blot-Anti-NeuroD1 pAb

Lane 1: Mouse kidney tissue lysate  
 Lane 2: Mouse heart tissue lysate  
 Lane 3: Rat brain tissue lysate  
 Lane 4: Rat liver tissue lysate  
 All lanes: Anti-NeuroD1 at 1:1000 dilution  
 Lysates/proteins at 20-50  $\mu$ g per lane.  
 Predicted band size: 40 kDa  
 Observed band size: 49 kDa



## Immunohistochemistry-Anti-NeuroD1 pAb

Immunohistochemical analysis of paraffin-embedded human breast cancer using anti-NeuroD1 Rabbit Antibody at 1:200 dilution. Perform heat mediated antigen retrieval with Tris-EDTA buffer pH 9.0