

Anti-AKT3 Rabbit pAb



WL0005a

For Research Use Only. Not For Use In Diagnostic Procedures

Product Information

Product name	Anti-AKT3 Rabbit pAb	
Source	Rabbit	
Species reactivity	Human, Mouse, Rat	
Tested applications	WB	1:500-1:1000
	IHC	1:50-1:500
	IF	1:200

Cellular localization Cytoplasm. Membrane

Pack size 50/100/200/500/1000µl

Storage Store at -20°C. **Avoid freeze/thaw cycles.**

Storage buffer Supplied in 20 mM phosphate (pH 7.5), 150 mM NaCl, 100 µg/ml BSA, 50% glycerol and less than 0.02% sodium azide

General Information

Background Akt3 is phosphorylated on a serine residue in response to insulin. However, the activation of Akt3 by insulin is inhibited by prior activation of protein kinase C via a mechanism that does not require the presence of the PH domain. Akt3 is expressed in 3T3-L1 fibroblasts, adipocytes and skeletal muscle and may be involved in various biological processes, including adipocyte and muscle differentiation, glycogen synthesis, glucose uptake, apoptosis and cellular proliferation.

Immunogen Polyclonal antibody is produced by immunizing animals with a synthetic peptide of AKT3.

Purification Polyclonal antibody was purified by immunogen affinity chromatography.

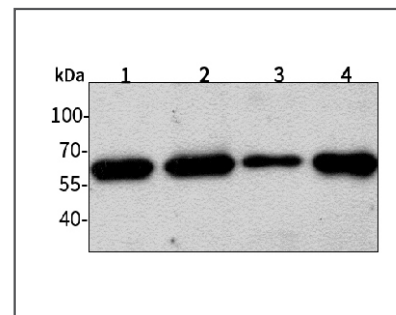
Anti-AKT3 Rabbit pAb



WL0005a

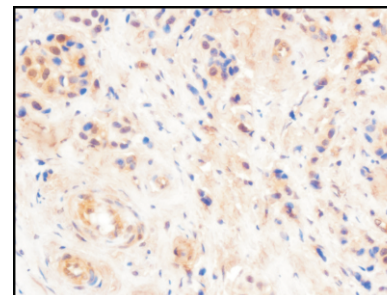
For Research Use Only. Not For Use In Diagnostic Procedures

Product Images



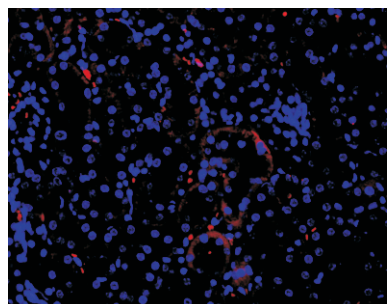
Western blot-Anti-AKT3 pAb

Lane 1: Human HeLa cell lysate
 Lane 2: Human SW480 cell lysate
 Lane 3: Human BGC-823 cell lysate
 Lane 4: Human MGC-803 cell lysate
 All lanes: Anti-AKT3 at 1:1000 dilution
 Lysates/proteins at 20-50 µg per lane.
 Predicted band size: 56 kDa
 Observed band size: 60 kDa



Immunohistochemistry-Anti-AKT3 pAb

Immunohistochemical analysis of paraffin-embedded human breast cancer using anti-AKT3 Rabbit Antibody at 1:300 dilution. Perform heat mediated antigen retrieval with Tris-EDTA buffer pH 9.0



Immunofluorescence-Anti-AKT3 pAb

Immunofluorescence analysis of paraffin-embedded mouse kidney using anti-AKT3 Rabbit Antibody at 1:200 dilution. Perform heat mediated antigen retrieval with Tris-EDTA buffer pH 9.0

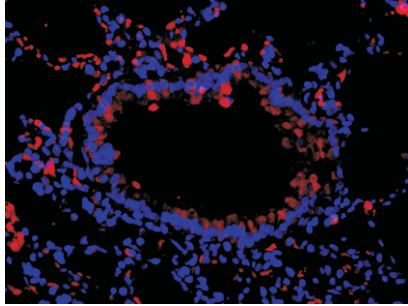
Anti-AKT3 Rabbit pAb



WL0005a

For Research Use Only. Not For Use In Diagnostic Procedures

Product Information



Immunofluorescence-Anti-AKT3 pAb

Immunofluorescence analysis of paraffin-embedded rat lung using anti-AKT3 Rabbit Antibody at 1:200 dilution.

Perform heat mediated antigen retrieval with Tris-EDTA buffer pH 9.0