

Anti-Ephrin A5 Rabbit pAb



WL00873

For Research Use Only. Not For Use In Diagnostic Procedures

Product Information

Product name	Anti-Ephrin A5 Rabbit pAb		
Source	Rabbit		
Species reactivity	Human, Mouse, Rat		
Tested applications	WB	1:1000-1:2000	
	IHC	1:200	
Cellular localization	Cell membrane. Membrane		
Pack size	50/100/200/500/1000µl		
Storage	Store at -20°C. Avoid freeze/thaw cycles.		
Storage buffer	Supplied in 20 mM phosphate (pH 7.5), 150 mM NaCl, 100 µg/ml BSA, 50% glycerol and less than 0.02% sodium azide		

General Information

Background	Ephrin-A5, a member of the ephrin family, prevents axon bundling in cocultures of cortical neurons with astrocytes, a model of late stage nervous system development and differentiation. As RTK ligands, ephrins stimulate the kinase activity of Eph receptors and activate signaling pathways in receptor-expressing cells. The ephrin extracellular domain is sufficient for this function as long as it is clustered. Based on their structures and sequence relationships, ephrins are divided into the ephrin-A (EFNA) class, which are anchored to the membrane by a glycosylphosphatidylinositol linkage, and the ephrin-B (EFNB) class, which are transmembrane proteins.
Immunogen	Polyclonal antibody is produced by immunizing animals with a synthetic peptide of Ephrin A5.
Purification	Polyclonal antibody was purified by Protein A affinity chromatography.

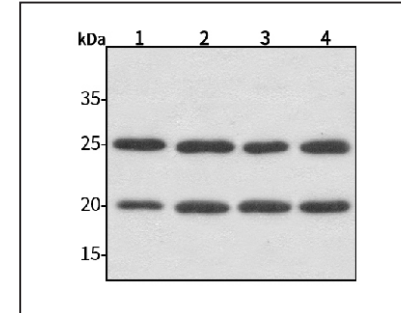
Anti-Ephrin A5 Rabbit pAb



WL00873

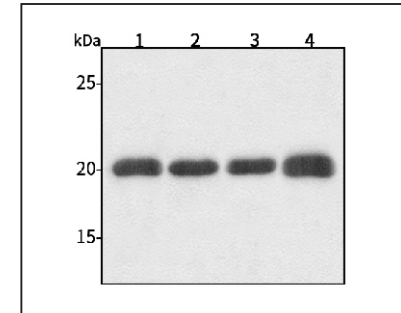
For Research Use Only. Not For Use In Diagnostic Procedures

Product Images



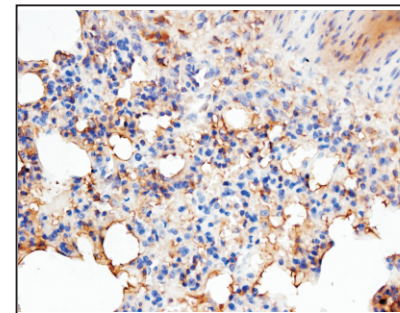
Western blot-Anti-Ephrin A5 pAb

Lane 1: Human HepG2 cell lysate
 Lane 2: Human Hela cell lysate
 Lane 3: Human BGC-823 cell lysate
 Lane 4: Human MGC-803 cell lysate
 All lanes: Anti-Ephrin A5 at 1:1000 dilution
 Lysates/proteins at 20-50 µg per lane.
 Predicted band size: 26 kDa
 Observed band size: 17-26 kDa



Western blot-Anti-Ephrin A5 pAb

Lane 1: Mouse kidney tissue lysate
 Lane 2: Mouse heart tissue lysate
 Lane 3: Rat brain tissue lysate
 Lane 4: Rat stomach tissue lysate
 All lanes: Anti-Ephrin A5 at 1:1000 dilution
 Lysates/proteins at 20-50 µg per lane.
 Predicted band size: 26 kDa
 Observed band size: 17-26 kDa



Immunohistochemistry-Anti-Ephrin A5 pAb

Immunohistochemical analysis of paraffin-embedded rat lung (LPS treated) using anti-Ephrin A5 Rabbit Antibody at 1:200 dilution. Perform heat mediated antigen retrieval with Tris-EDTA buffer pH 9.0

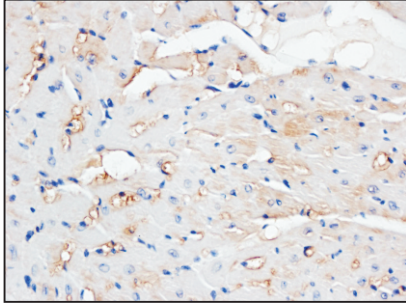
Anti-Ephrin A5 Rabbit pAb



WL00873

For Research Use Only. Not For Use In Diagnostic Procedures

Product Information



Immunohistochemistry-Anti-Ephrin A5 pAb

Immunohistochemical analysis of paraffin-embedded mouse heart (LPS treated) using anti-Ephrin A5 Rabbit Antibody at 1:200 dilution.

Perform heat mediated antigen retrieval with Tris-EDTA buffer pH 9.0