



## Anti-Caspase-3/Cleaved Caspase-3 Rabbit pAb

WL02117

For Research Use Only. Not For Use In Diagnostic Procedures

## Product Information

<b>Product name</b>	Anti-Caspase-3/Cleaved Caspase-3 Rabbit pAb	
<b>Source</b>	Rabbit	
<b>Species reactivity</b>	Human, Mouse, Rat	
<b>Tested applications</b>	WB	1:500-1:1000
	IHC	1:150-1:500
	IF	1:500
<b>Cellular localization</b>	Cytoplasm	
<b>Pack size</b>	50/100/200/500/1000µl	
<b>Storage</b>	Store at -20°C. <b>Avoid freeze/thaw cycles.</b>	
<b>Storage buffer</b>	Supplied in 20 mM phosphate (pH 7.5), 150 mM NaCl, 100 µg/ml	
	BSA, 50% glycerol and less than 0.02% sodium azide	

## General Information

<b>Background</b>	This Caspase-3 is a member of the cysteine-aspartic acid protease (caspase) family. Sequential activation of caspases plays a central role in the execution-phase of cell apoptosis. Caspases exist as inactive proenzymes which undergo proteolytic processing at conserved aspartic residues to produce two subunits, large and small, that dimerize to form the active enzyme. This protein cleaves and activates caspases 6, 7 and 9, and the protein itself is processed by caspases 8, 9 and 10. Caspase-3 is a critical executioner of apoptosis, as it is either partially or totally responsible for the proteolytic cleavage of many key proteins, such as the nuclear enzyme poly (ADP-ribose) polymerase (PARP).
<b>Immunogen</b>	Polyclonal antibody is produced by immunizing animals with a synthetic peptide of Caspase-3/Cleaved Caspase-3.
<b>Purification</b>	Polyclonal antibody was purified by immunogen affinity chromatography.

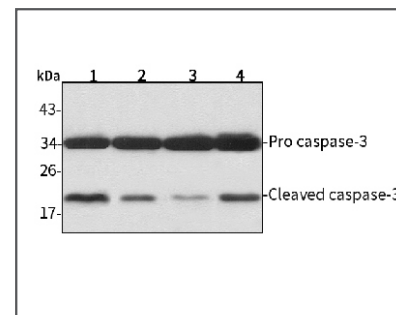


## Anti-Caspase-3/Cleaved Caspase-3 Rabbit pAb

WL02117

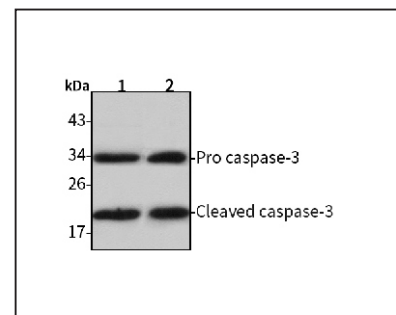
For Research Use Only. Not For Use In Diagnostic Procedures

## Product Images



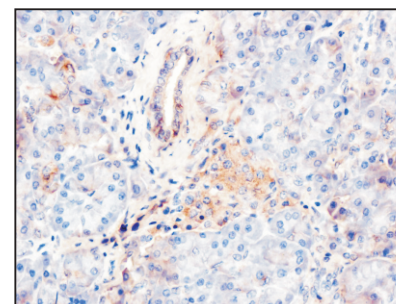
## Western blot-Anti-Caspase-3/Cleaved Caspase-3 pAb

**Lane 1:** Human HepG2 cell lysate  
**Lane 2:** Human Hela cell lysate  
**Lane 3:** Human BGC-823 cell lysate  
**Lane 4:** Human MGC-803 cell lysate  
**All lanes:** Anti-Caspase-3/Cleaved Caspase-3 at 1:1000 dilution  
 Lysates/proteins at 20-50 µg per lane.  
 Predicted band size: 32,20 kDa  
 Observed band size: 32,20 kDa



## Western blot-Anti-Caspase-3/Cleaved Caspase-3 pAb

**Lane 1:** Mouse liver tissue lysate  
**Lane 2:** Rat liver tissue lysate  
**All lanes:** Anti-Caspase-3/Cleaved Caspase-3 at 1:1000 dilution  
 Lysates/proteins at 20-50 µg per lane.  
 Predicted band size: 32,20 kDa  
 Observed band size: 32,20 kDa



## Immunohistochemistry-Anti-Caspase-3/Cleaved Caspase-3 pAb

Immunohistochemical analysis of paraffin-embedded human pancreatic cancer using anti-Caspase-3/Cleaved Caspase-3 Rabbit Antibody at 1:150 dilution.  
 Perform heat mediated antigen retrieval with Tris-EDTA buffer pH 9.0

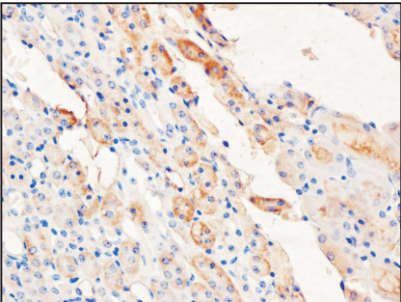


Anti-Caspase-3/Cleaved Caspase-3 Rabbit pAb

WL02117

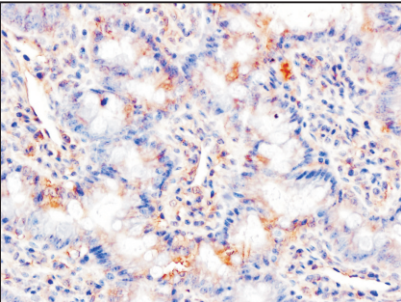
For Research Use Only. Not For Use In Diagnostic Procedures

Product Images



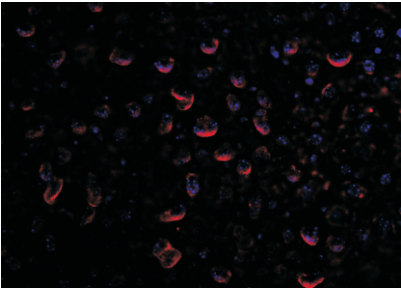
Immunohistochemistry-Anti-Caspase-3/Cleaved Caspase-3 pAb

Immunohistochemical analysis of paraffin-embedded mouse kidney using anti-Caspase-3/Cleaved Caspase-3 Rabbit Antibody at 1:150 dilution. Perform heat mediated antigen retrieval with Tris-EDTA buffer pH 9.0



Immunohistochemistry-Anti-Caspase-3/Cleaved Caspase-3 pAb

Immunohistochemical analysis of paraffin-embedded rat colon using anti-Caspase-3/Cleaved Caspase-3 Rabbit Antibody at 1:150 dilution. Perform heat mediated antigen retrieval with Tris-EDTA buffer pH 9.0



Immunofluorescence-Anti-Caspase-3/Cleaved Caspase-3 pAb

Immunofluorescence analysis of paraffin-embedded mouse liver using anti-Caspase-3/Cleaved Caspase-3 Rabbit Antibody at 1:500 dilution. Perform heat mediated antigen retrieval with Tris-EDTA buffer pH 9.0

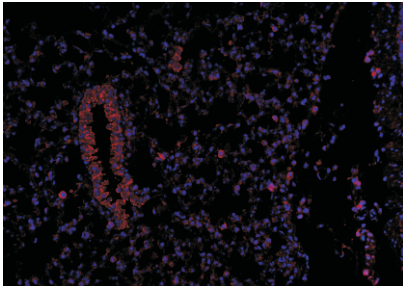


Anti-Caspase-3/Cleaved Caspase-3 Rabbit pAb

WL02117

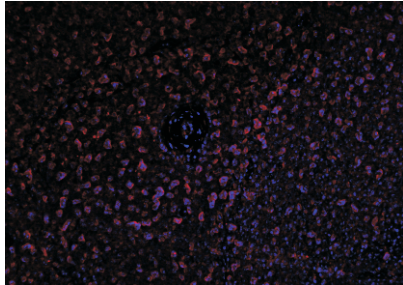
For Research Use Only. Not For Use In Diagnostic Procedures

Product Images



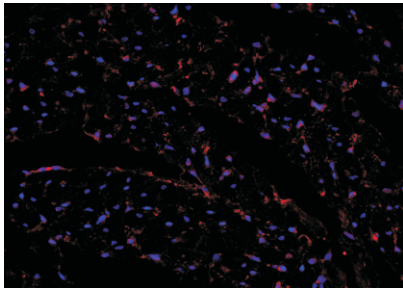
Immunofluorescence-Anti-Caspase-3/Cleaved Caspase-3 pAb

Immunofluorescence analysis of paraffin-embedded mouse lung using anti-Caspase-3/Cleaved Caspase-3 Rabbit Antibody at 1:500 dilution. Perform heat mediated antigen retrieval with Tris-EDTA buffer pH 9.0



Immunofluorescence-Anti-Caspase-3/Cleaved Caspase-3 pAb

Immunofluorescence analysis of paraffin-embedded rat spleen using anti-Caspase-3/Cleaved Caspase-3 Rabbit Antibody at 1:500 dilution. Perform heat mediated antigen retrieval with Tris-EDTA buffer pH 9.0



Immunofluorescence-Anti-Caspase-3/Cleaved Caspase-3 pAb

Immunofluorescence analysis of paraffin-embedded rat heart using anti-Caspase-3/Cleaved Caspase-3 Rabbit Antibody at 1:500 dilution. Perform heat mediated antigen retrieval with Tris-EDTA buffer pH 9.0