

## Anti-CSF-1-R Rabbit pAb



WL01272

For Research Use Only. Not For Use In Diagnostic Procedures

## Product Information

<b>Product name</b>	Anti-CSF-1-R Rabbit pAb
<b>Source</b>	Rabbit
<b>Species reactivity</b>	Human, Mouse, Rat
<b>Tested applications</b>	WB 1:500-1:1000
<b>Pack size</b>	50/100/200/500/1000µl
<b>Storage</b>	Store at -20°C. <b>Avoid freeze/thaw cycles.</b>
<b>Storage buffer</b>	Supplied in 20 mM phosphate (pH 7.5), 150 mM NaCl, 100 µg/ml BSA, 50% glycerol and less than 0.02% sodium azide

## General Information

**Background**

The encoded protein is a tyrosine kinase transmembrane receptor and member of the CSF1/PDGF receptor family of tyrosine-protein kinases. Mutations in this gene have been associated with a predisposition to myeloid malignancy. The first intron of this gene contains a transcriptionally inactive ribosomal protein L7 processed pseudogene oriented in the opposite direction. Alternative splicing results in multiple transcript variants.

**Immunogen**

Polyclonal antibody is produced by immunizing animals with a synthetic peptide of CSF-1-R.

**Purification**

Polyclonal antibody was purified by immunogen affinity chromatography.

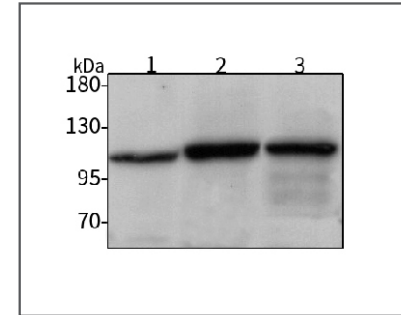
## Anti-CSF-1-R Rabbit pAb



WL01272

For Research Use Only. Not For Use In Diagnostic Procedures

## Product Images



## Western blot-Anti-CSF-1-R pAb

Lane 1: Human HEK-293 cell lysate

Lane 2: Human HCT116 cell lysate

Lane 3: Human HUVEC cell lysate

All lanes: Anti-CSF-1-R at 1:1000 dilution

Lysates/proteins at 20-50 µg per lane.

Predicted band size: 108 kDa

Observed band size: 108 kDa