

Anti-TRAF6 Rabbit pAb



WL04705

For Research Use Only. Not For Use In Diagnostic Procedures

Product Information

Product name	Anti-TRAF6 Rabbit pAb	
Source	Rabbit	
Species reactivity	Mouse, Rat	
Tested applications	Western blot	1:1000 -1:2000

**Suggested working dilutions are given as a guide only. It is recommended that the user titrates the product for use in their own experiment using appropriate negative and positive controls.*

Molecular Wt.	60 kDa
Pack size	50/100/200/500/1000 μ l
Storage	Store at -20°C. Avoid freeze/thaw cycles.
Storage buffer	Supplied in 20 mM phosphate (pH 7.5), 150 mM NaCl, 100 μ g/ml BSA, 50% glycerol and less than 0.02% sodium azide

General Information

Background

TRAFs (TNF receptor-associated factors) are a family of multifunctional adaptor proteins that bind to surface receptors and recruit additional proteins to form multiprotein signaling complexes capable of promoting cellular responses. Tumor necrosis factor receptor-associated factor 6 (TRAF6) regulates adaptive immunity, innate immunity and bone metabolism. TRAF6 is a ubiquitin (Ub) ligase that mediates the activation of protein kinases. TRAF6 plays a critical role in innate and adaptive immunity, bone metabolism, and development of certain tissues including the nervous system. TRAF6 also activates Src family nonreceptor tyrosine kinases leading to Akt activation.

Immunogen

Polyclonal antibody is produced by immunizing animals with a synthetic peptide of TRAF6.

Purification

Polyclonal antibody was purified by Protein A affinity chromatography.

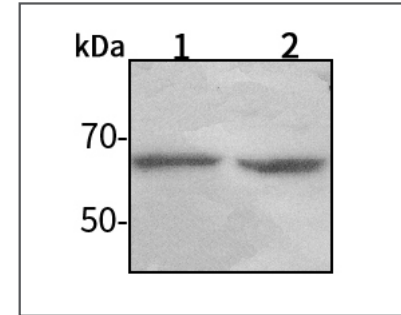
Anti-TRAF6 Rabbit pAb



WL04705

For Research Use Only. Not For Use In Diagnostic Procedures

Product Images



Western blot-Anti-TRAF6 pAb

Lane 1: Mouse heart tissue lysate 30 μ g

Lane 2: Rat kidney tissue lysate 30 μ g

Separation gel: 8% polyacrylamide

Electrophoresis: 100V, 4°C, 3h

Transmembrane: 100V, 4°C, 1h

Blocking: 5% w/v nonfat dry milk, 1 \times TBST, at RT with gentle shaking

Primary antibody: 1:1000 in blocking buffer, 4°C, overnight

Visualization: ECL, 30s-2min