



For Research Use Only. Not For Use In Diagnostic Procedures

## Product Information

<b>Product name</b>	Anti-Ube2N / Ubc13 Rabbit pAb		
<b>Source</b>	Rabbit		
<b>Species reactivity</b>	Human, Mouse, Rat		
<b>Tested applications</b>	Western blot	1:500-1:1000	
	<i>*Suggested working dilutions are given as a guide only. It is recommended that the user titrates the product for use in their own experiment using appropriate negative and positive controls.</i>		
<b>Molecular Wt.</b>	17 kDa		
<b>Pack size</b>	50/100/200/500/1000µl		
<b>Storage</b>	Store at -20°C. <b>Avoid freeze/thaw cycles.</b>		
<b>Storage buffer</b>	Supplied in 20 mM phosphate (pH 7.5), 150 mM NaCl, 100 µg/ml BSA, 50% glycerol and less than 0.02% sodium azide		

## General Information

**Background**

The modification of proteins with ubiquitin is an important cellular mechanism for targeting abnormal or short-lived proteins for degradation. The three classes of enzymes involved in ubiquitination are the ubiquitinactivating enzymes (E1s), the ubiquitin-conjugating enzymes (E2s) and the ubiquitin-protein ligases (E3s). Existing as a heterodimer with Mms2 (also known as UBE2V2), UBC13 catalyzes the ATP-dependent synthesis of non-canonical polyubiquitin chains, a process that does not lead to proteasomal degradation.

**Immunogen**

Polyclonal antibody is produced by immunizing animals with a synthetic peptide of Ube2N / Ubc13.

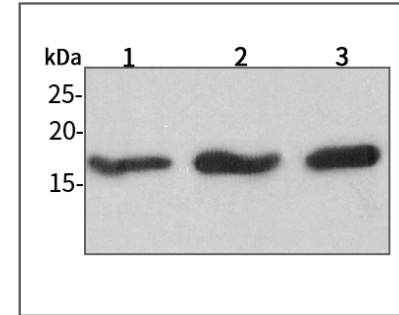
**Purification**

Polyclonal antibody was purified by immunogen affinity chromatography.



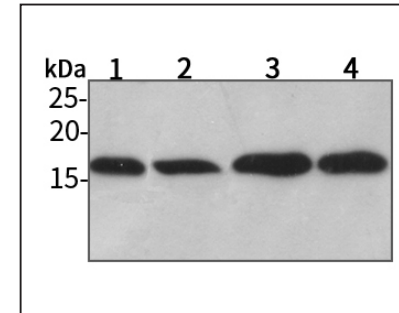
For Research Use Only. Not For Use In Diagnostic Procedures

## Product Images



Western blot-Anti-Ube2N / Ubc13 pAb

Lane 1: Human HeLa cell lysate 30µg  
 Lane 2: Human MCF-7 cell lysate 30µg  
 Lane 3: Human HEK-293 cell lysate 30µg  
 Separation gel: 15% polyacrylamide  
 Electrophoresis: 100V, 4°C, 3h  
 Transmembrane: 100V, 4°C, 1h  
 Blocking: 5% w/v nonfat dry milk, 1×TBST, at RT with gentle shaking  
 Primary antibody: 1:1000 in blocking buffer, 4°C, overnight  
 Secondary antibody (WLA023a) : 1:5000-1:10000, 45min  
 Detection: ECL, 30s-2min



Western blot-Anti-Ube2N / Ubc13 pAb

Lane 1: Mouse liver tissue lysate 30µg  
 Lane 2: Mouse lung tissue lysate 30µg  
 Lane 3: Mouse colon tissue lysate 30µg  
 Lane 4: Mouse stomach tissue lysate 30µg  
 Separation gel: 15% polyacrylamide  
 Electrophoresis: 100V, 4°C, 3h  
 Transmembrane: 100V, 4°C, 1h  
 Blocking: 5% w/v nonfat dry milk, 1×TBST, at RT with gentle shaking  
 Primary antibody: 1:1000 in blocking buffer, 4°C, overnight  
 Secondary antibody (WLA023a) : 1:5000-1:10000, 45min  
 Detection: ECL, 30s-2min