

Anti-CD24 Rabbit pAb



WL04263

For Research Use Only. Not For Use In Diagnostic Procedures

Product Information

Product name	Anti-CD24 Rabbit pAb
Source	Rabbit
Species reactivity	Human, Mouse, Rat
Tested applications	WB 1:500-1:1000
Cellular localization	Secreted and Cell membrane
Pack size	50/100/200/500/1000µl
Storage	Store at -20°C. Avoid freeze/thaw cycles.
Storage buffer	Supplied in 20 mM phosphate (pH 7.5), 150 mM NaCl, 100 µg/ml BSA, 50% glycerol and less than 0.02% sodium azide

General Information

Background Cd24 (known as heat stable antigen) is a small highly glycosylated GPI-linked sialoprotein. It is normally expressed at the surface of most B lymphocytes and differentiating neuroblasts, and it is also up-regulated in a wide variety of cancers. Studies have shown that CD24 functions in the regulation of B-cell apoptosis, leukocyte signal transduction, and leukocyte adhesion.

Immunogen Polyclonal antibody is produced by immunizing animals with a synthetic peptide of CD24.

Purification Polyclonal antibody was purified by immunogen affinity chromatography.

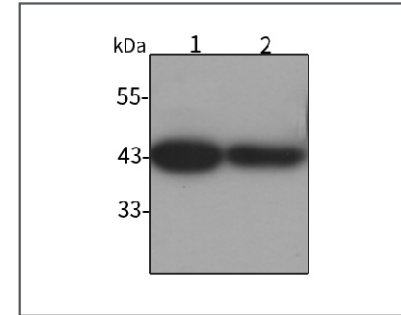
Anti-CD24 Rabbit pAb



WL04263

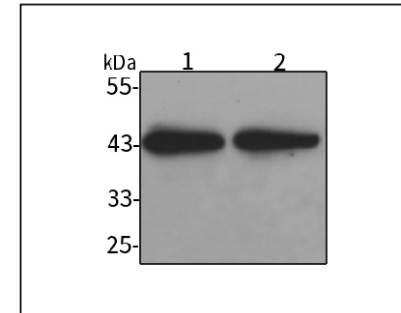
For Research Use Only. Not For Use In Diagnostic Procedures

Product Images



Western blot-Anti-CD24 pAb

Lane 1: Human MDA-MB-231 cell lysate
 Lane 2: Human A549 cell lysate
 All lanes: Anti-CD24 at 1:1000 dilution
 Lysates/proteins at 20-50 µg per lane.
 Predicted band size: 61 kDa
 Observed band size: 43 kDa



Western blot-Anti-CD24 pAb

Lane 1: Mouse heart tissue lysate
 Lane 2: Rat colon tissue lysate
 All lanes: Anti-CD24 at 1:1000 dilution
 Lysates/proteins at 20-50 µg per lane.
 Predicted band size: 61 kDa
 Observed band size: 43 kDa