

Anti-CCN3 Rabbit pAb



WL01443

For Research Use Only. Not For Use In Diagnostic Procedures

Product Information

Product name	Anti-CCN3 Rabbit pAb	
Source	Rabbit	
Species reactivity	Human, Mouse, Rat	
Tested applications	WB	1:1000-1:2000
	IHC	1:500
	IF	1:500

Cellular localization Secreted

Pack size 50/100/200/500/1000µl

Storage Store at -20°C. **Avoid freeze/thaw cycles.**

Storage buffer Supplied in 20 mM phosphate (pH 7.5), 150 mM NaCl, 100 µg/ml BSA, 50% glycerol and less than 0.02% sodium azide

General Information

Background The protein encoded by this gene is a small secreted cysteine-rich protein and a member of the CCN family of regulatory proteins. CNN family proteins associate with the extracellular matrix and play an important role in cardiovascular and skeletal development, fibrosis and cancer development.

Immunogen Polyclonal antibody is produced by immunizing animals with a synthetic peptide of CCN3.

Purification Polyclonal antibody was purified by Protein A affinity chromatography.

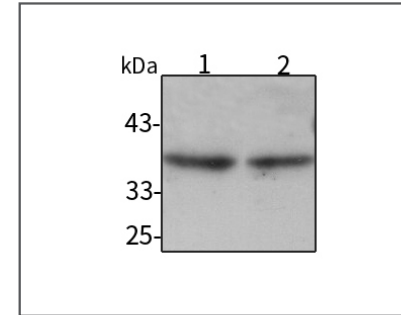
Anti-CCN3 Rabbit pAb



WL01443

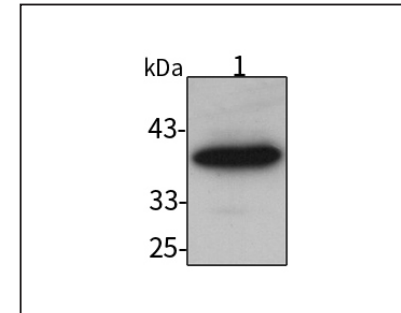
For Research Use Only. Not For Use In Diagnostic Procedures

Product Images



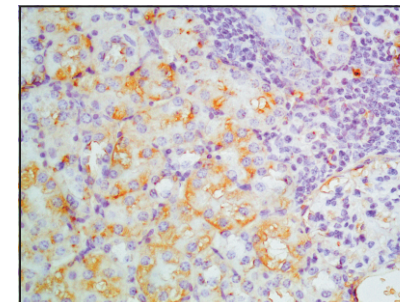
Western blot-Anti-CCN3 pAb

Lane 1: Human HeLa cell lysate
Lane 2: Human HEK-293 cell lysate
All lanes: Anti-CCN3 at 1:1000 dilution
Lysates/proteins at 20-50 µg per lane.
Predicted band size: 39 kDa
Observed band size: 39 kDa



Western blot-Anti-CCN3 pAb

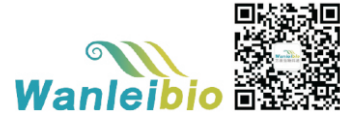
Lane 1: Mouse brain tissue lysate
All lanes: Anti-CCN3 at 1:1000 dilution
Lysates/proteins at 20-50 µg per lane.
Predicted band size: 39 kDa
Observed band size: 39 kDa



Immunohistochemistry-Anti-CCN3 pAb

Immunohistochemical analysis of paraffin-embedded mouse kidney using anti-CCN3 Rabbit Antibody at 1:500 dilution.
Perform heat mediated antigen retrieval with Tris-EDTA buffer pH 9.0

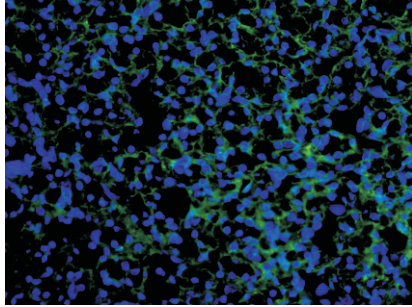
Anti-CCN3 Rabbit pAb



WL01443

For Research Use Only. Not For Use In Diagnostic Procedures

Product Information



Immunofluorescence-Anti-CCN3 pAb

Immunofluorescence analysis of paraffin-embedded human kidney cancer using anti-CCN3 Rabbit Antibody at 1:500 dilution.

Perform heat mediated antigen retrieval with Tris-EDTA buffer pH 9.0