

Anti-Wilms tumor1/WT1 Rabbit pAb



WL02866

For Research Use Only. Not For Use In Diagnostic Procedures

Product Information

Product name	Anti-Wilms tumor1/WT1 Rabbit pAb	
Source	Rabbit	
Species reactivity	Human, Mouse, Rat	
Tested applications	Western blot	1:500-1:1000

**Suggested working dilutions are given as a guide only. It is recommended that the user titrates the product for use in their own experiment using appropriate negative and positive controls.*

Molecular Wt.	52 kDa
Pack size	50/100/200/500/1000µl
Storage	Store at -20°C. Avoid freeze/thaw cycles.
Storage buffer	Supplied in 20 mM phosphate (pH 7.5), 150 mM NaCl, 100 µg/ml BSA, 50% glycerol and less than 0.02% sodium azide

General Information

Background

Wilms' Tumor 1 (WT1) is a transcription factor named from Wilms' Tumor 1, an embryonal malignancy of the kidneys that is caused by mutations in the WT1 gene. It is highly important in development, particularly of the genitourinary system, and mutations and dysregulation of expression of WT1 result in a variety of syndromes affecting the genitourinal system and other tissues. WT1 has myriad biological functions and a host of interacting partners and target genes. It can behave as a transcriptional activator, or a repressor, and can act as an oncogene or a tumor suppressor.

Immunogen

Polyclonal antibody is produced by immunizing animals with a synthetic peptide of Wilms tumor1/WT1.

Purification

Polyclonal antibody was purified by immunogen affinity chromatography.

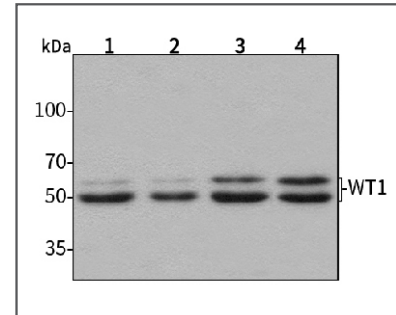
Anti-Wilms tumor1/WT1 Rabbit pAb



WL02866

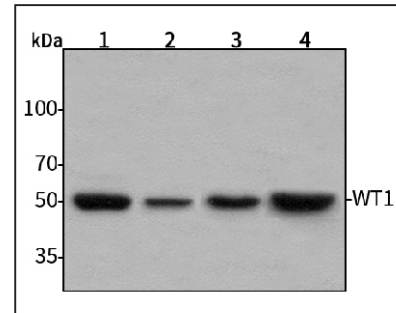
For Research Use Only. Not For Use In Diagnostic Procedures

Product Images



Western blot-Anti-Wilms tumor1/WT1 pAb

Lane 1: Human HepG2 cell lysate 30µg
 Lane 2: Human Hela cell lysate 30µg
 Lane 3: Human BGC-823 cell lysate 30µg
 Lane 4: Human SGC-7901 cell lysate 30µg
 Separation gel: 10% polyacrylamide
 Electrophoresis: 100V, 4°C, 3h
 Transmembrane: 100V, 4°C, 1h
 Blocking: 5% w/v nonfat dry milk, 1× TBST, at RT with gentle shaking
 Primary antibody: 1:1000 in blocking buffer, 4°C, overnight
 Secondary antibody (WLA023a) : 1:5000-1:10000, 45min
 Detection: ECL, 30s-2min



Western blot-Anti-Wilms tumor1/WT1 pAb

Lane 1: Mouse heart tissue lysate 30µg
 Lane 2: Mouse brain tissue lysate 30µg
 Lane 3: Rat lung tissue lysate 30µg
 Lane 4: Rat stomach tissue lysate 30µg
 Separation gel: 10% polyacrylamide
 Electrophoresis: 100V, 4°C, 3h
 Transmembrane: 100V, 4°C, 1h
 Blocking: 5% w/v nonfat dry milk, 1× TBST, at RT with gentle shaking
 Primary antibody: 1:1000 in blocking buffer, 4°C, overnight
 Secondary antibody (WLA023a) : 1:5000-1:10000, 45min
 Detection: ECL, 30s-2min