

## Anti-ACTA1/Actin Rabbit pAb



WL0002d

For Research Use Only. Not For Use In Diagnostic Procedures

## Product Information

<b>Product name</b>	Anti-ACTA1/Actin Rabbit pAb	
<b>Source</b>	Rabbit	
<b>Species reactivity</b>	Human, Mouse, Rat	
<b>Tested applications</b>	WB	1:1000-1:2000
	IHC	1:500
	IF	1:300-1:500

**Cellular localization** Cytoplasm and Cytoskeleton

**Pack size** 50/100/200/500/1000µl

**Storage** Store at -20°C. **Avoid freeze/thaw cycles.**

**Storage buffer** Supplied in 20 mM phosphate (pH 7.5), 150 mM NaCl, 100 µg/ml BSA, 50% glycerol and less than 0.02% sodium azide

## General Information

**Background** Actin belongs to the actin family of proteins, which are highly conserved proteins that play a role in cell motility, structure and integrity. Alpha, beta and gamma actin isoforms have been identified, with alpha actins being a major constituent of the contractile apparatus, while beta and gamma actins are involved in the regulation of cell motility. All eukaryotic cells express Actin, which often constitutes as much as 50% of total cellular protein. Actin filaments can form both stable and labile structures and are crucial components of microvilli and the contractile apparatus of muscle cells.

**Immunogen** Polyclonal antibody is produced by immunizing animals with a synthetic peptide of ACTA1/Actin.

**Purification** Polyclonal antibody was purified by protein A affinity chromatography.

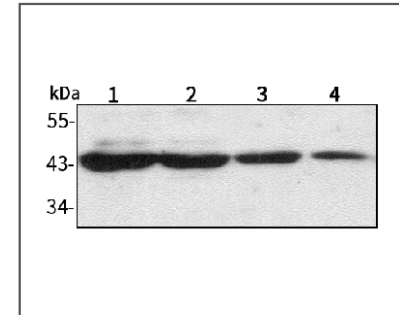
## Anti-ACTA1/Actin Rabbit pAb



WL0002d

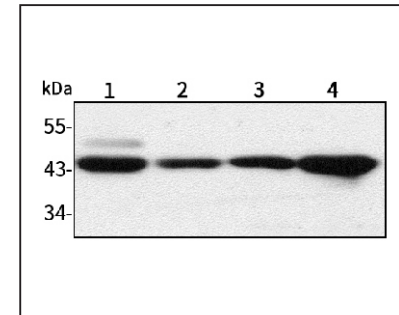
For Research Use Only. Not For Use In Diagnostic Procedures

## Product Images



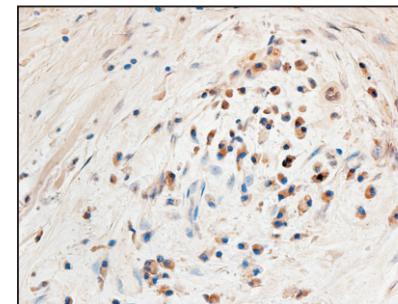
## Western blot-Anti-ACTA1/Actin pAb

Lane 1: Human HepG2 cell lysate  
 Lane 2: Human Hela cell lysate  
 Lane 3: Human BGC-823 cell lysate  
 Lane 4: Human MGC-803 cell lysate  
 All lanes: Anti-ACTA1/Actin at 1:1000 dilution  
 Lysates/proteins at 20-50 µg per lane  
 Predicted band size: 42 kDa  
 Observed band size: 42 kDa



## Western blot-Anti-ACTA1/Actin pAb

Lane 1: Mouse heart tissue lysate  
 Lane 2: Mouse lung tissue lysate  
 Lane 3: Mouse skin tissue lysate  
 Lane 4: Mouse colon tissue lysate  
 All lanes: Anti-ACTA1/Actin at 1:1000 dilution  
 Lysates/proteins at 20-50 µg per lane  
 Predicted band size: 42 kDa  
 Observed band size: 42 kDa



## Immunohistochemistry-Anti-ACTA1/Actin pAb

Immunohistochemical analysis of paraffin-embedded human colon cancer using anti-ACTA1/Actin Rabbit Antibody at 1:500 dilution. Perform heat mediated antigen retrieval with Tris-EDTA buffer pH 9.0

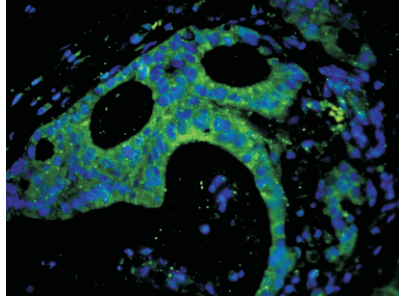


## Anti-ACTA1/Actin Rabbit pAb

WL0002d

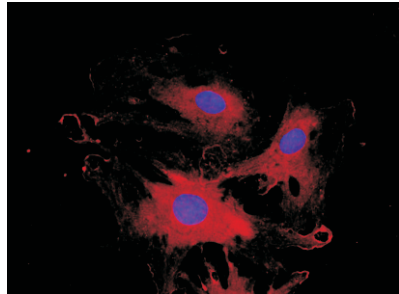
For Research Use Only. Not For Use In Diagnostic Procedures

### Product Information



#### Immunofluorescence-Anti-ACTA1/Actin pAb

Immunofluorescence analysis of paraffin-embedded human colon cancer using anti-ACTA1/Actin Rabbit Antibody at 1:300 dilution.  
Perform heat mediated antigen retrieval with Tris-EDTA buffer pH 9.0



#### Immunofluorescence-Anti-ACTA1/Actin pAb

Immunofluorescence analysis of Primary cardiomyocytes using anti-ACTA1/Actin Rabbit Antibody at 1:500 dilution.