

Anti-TLR7 Rabbit pAb



WL04518

For Research Use Only. Not For Use In Diagnostic Procedures

Product Information

Product name	Anti-TLR7 Rabbit pAb	
Source	Rabbit	
Species reactivity	Human, Mouse, Rat	
Tested applications	Western blot	1:1000-1:2000

**Suggested working dilutions are given as a guide only. It is recommended that the user titrates the product for use in their own experiment using appropriate negative and positive controls.*

Molecular Wt. 121 kDa

Pack size 50/100/200/500/1000 μ l

Storage Store at -20°C. **Avoid freeze/thaw cycles.**

Storage buffer Supplied in 20 mM phosphate (pH 7.5), 150 mM NaCl, 100 μ g/ml BSA, 50% glycerol and less than 0.02% sodium azide

General Information

Background TLR7 is a member of the Toll-like receptor (TLR) family which plays a fundamental role in pathogen recognition and activation of innate immunity. The TLR family members are characterized by a highly conserved Toll homology (TH) domain, which is essential for Toll-induced signal transductions. They recognize pathogen-associated molecular patterns (PAMPs) that are expressed on infectious agents, and mediate the production of cytokines necessary for the development of effective immunity.

Immunogen Polyclonal antibody is produced by immunizing animals with a synthetic peptide of TLR7.

Purification Polyclonal antibody was purified by Protein A affinity chromatography.

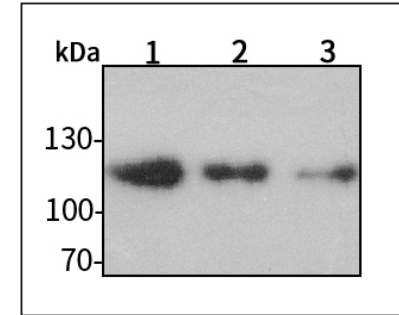
Anti-TLR7 Rabbit pAb



WL04518

For Research Use Only. Not For Use In Diagnostic Procedures

Product Images



Western blot-Anti-TLR7 pAb

Lane 1: Human HeLa cell lysate 30 μ g
 Lane 2: Human MCF-7 cell lysate 30 μ g
 Lane 3: Human HEK-293 cell lysate 30 μ g

Separation gel: 8% polyacrylamide

Electrophoresis: 100V, 4°C, 3h

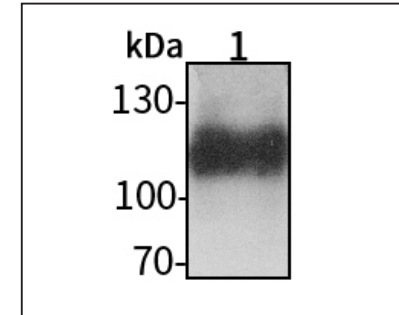
Transmembrane: 100V, 4°C, 1h

Blocking: 5% w/v nonfat dry milk, 1 \times TBST, at RT with gentle shaking

Primary antibody: 1:1000 in blocking buffer, 4°C, overnight

Secondary antibody (WLA023a) : 1:5000-1:10000, 45min

Detection: ECL, 30s-2min



Western blot-Anti-TLR7 pAb

Lane 1: Rat colon tissue lysate 30 μ g

Separation gel: 8% polyacrylamide

Electrophoresis: 100V, 4°C, 3h

Transmembrane: 100V, 4°C, 1h

Blocking: 5% w/v nonfat dry milk, 1 \times TBST, at RT with gentle shaking

Primary antibody: 1:1000 in blocking buffer, 4°C, overnight

Secondary antibody (WLA023a) : 1:5000-1:10000, 45min

Detection: ECL, 30s-2min