

## Anti-IGF1 Rabbit pAb



WL04589

For Research Use Only. Not For Use In Diagnostic Procedures

## Product Information

<b>Product name</b>	Anti-IGF1 Rabbit pAb	
<b>Source</b>	Rabbit	
<b>Species reactivity</b>	Human, Mouse, Rat	
<b>Tested applications</b>	WB	1:1000-1:2000
<b>Pack size</b>	50/100/200/500/1000µl	
<b>Storage</b>	Store at -20°C. <b>Avoid freeze/thaw cycles.</b>	
<b>Storage buffer</b>	Supplied in 20 mM phosphate (pH 7.5), 150 mM NaCl, 100 µg/ml BSA, 50% glycerol and less than 0.02% sodium azide	

## General Information

**Background** IGF1B belongs to the insulin family. Insulin-like growth factor I, or IGF-I, is an ubiquitous peptide that acts in both an autocrine and paracrine fashion to stimulate the growth of vascular smooth muscle cells. IGF function is modulated by at least six circulating IGF-binding proteins, designated IGFBP1-6, which associate with the soluble growth factor. Defects in IGF1 are the cause of insulin-like growth factor I deficiency (IGF1 deficiency) which is an autosomal recessive disorder characterized by growth retardation, sensorineural deafness and mental retardation.

**Immunogen** Polyclonal antibody is produced by immunizing animals with a synthetic peptide of IGF1.

**Purification** Polyclonal antibody was purified Protein A affinity chromatography.

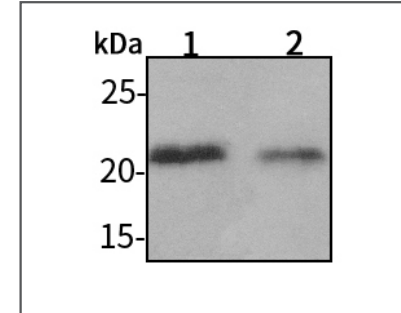
## Anti-IGF1 Rabbit pAb



WL04589

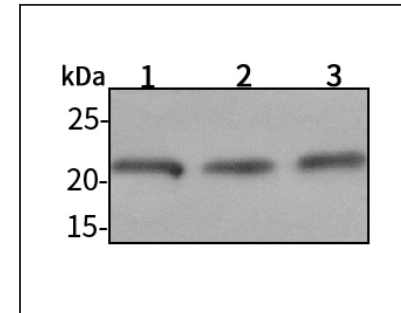
For Research Use Only. Not For Use In Diagnostic Procedures

## Product Images



Western blot-Anti-IGF1 pAb

Lane 1: Rat lung tissue lysate  
 Lane 2: Rat colon tissue lysate  
 All lanes: Anti-IGF1 at 1:1000 dilution  
 Lysates/proteins at 20-50 µg per lane.  
 Predicted band size: 22 kDa  
 Observed band size: 22 kDa



Western blot-Anti-IGF1 pAb

Lane 1: Rat lung tissue lysate  
 Lane 2: Rat colon tissue lysate  
 Lane 3: Rat stomach tissue lysate  
 All lanes: Anti-IGF1 at 1:1000 dilution  
 Lysates/proteins at 20-50 µg per lane.  
 Predicted band size: 22 kDa  
 Observed band size: 22 kDa