

Anti-DKK1 Rabbit pAb



WL02592

For Research Use Only. Not For Use In Diagnostic Procedures

Product Information

Product name	Anti-DKK1 Rabbit pAb	
Source	Rabbit	
Species reactivity	Human, Mouse, Rat	
Tested applications	WB	1:1000-1:2000
	IF	1:500
Cellular localization	Secreted	
Pack size	50/100/200/500/1000µl	
Storage	Store at -20°C. Avoid freeze/thaw cycles.	
Storage buffer	Supplied in 20 mM phosphate (pH 7.5), 150 mM NaCl, 100 µg/ml BSA, 50% glycerol and less than 0.02% sodium azide	

General Information

Background	This gene encodes a member of the dickkopf family of proteins. Members of this family are secreted proteins characterized by two cysteine-rich domains that mediate protein-protein interactions. The Dickkopf family of secreted inhibitors of Wnt signaling ensures proper morphological development by antagonizing different stages of the Wnt cascade. Dkk-1 (Dickkopf-1) acts upstream of β -catenin and dishevelled to inhibit Wnt signaling. Dkk-1 is a 266-amino acid (human), secreted protein that contains a 31-residue N-terminal signal peptide, 2 cysteine rich domains, and a putative carboxy-terminal N-glycosylation site.
Immunogen	Polyclonal antibody is produced by immunizing animals with a synthetic peptide of DKK1.
Purification	Polyclonal antibody was purified by Protein A affinity chromatography.

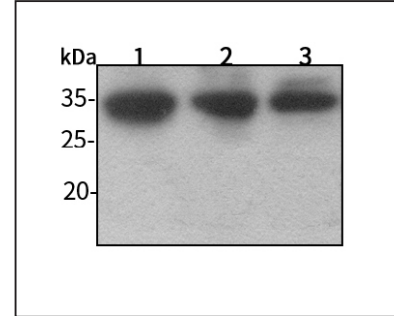
Anti-DKK1 Rabbit pAb



WL02592

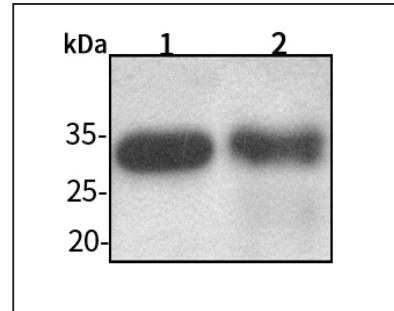
For Research Use Only. Not For Use In Diagnostic Procedures

Product Images



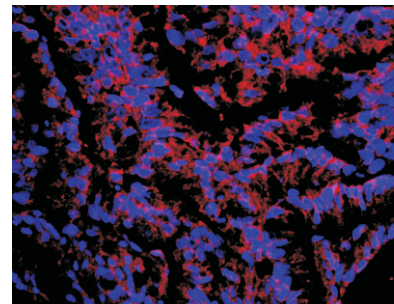
Western blot-Anti-DKK1 pAb

Lane 1: Human HeLa cell lysate
 Lane 2: Human MCF-7 cell lysate
 Lane 3: Human HEK-293 cell lysate
 All lanes: Anti-DKK1 at 1:1000 dilution
 Lysates/proteins at 20-50 µg per lane.
 Predicted band size: 29 kDa
 Observed band size: 35 kDa



Western blot-Anti-DKK1 pAb

Lane 1: Mouse kidney tissue lysate
 Lane 2: Rat stomach tissue lysate
 All lanes: Anti-DKK1 at 1:1000 dilution
 Lysates/proteins at 20-50 µg per lane.
 Predicted band size: 29 kDa
 Observed band size: 35 kDa



Immunofluorescence-Anti-DKK1 pAb

Immunofluorescence analysis of paraffin-embedded human colon cancer using anti-DKK1 Rabbit Antibody at 1:500 dilution.
 Perform heat mediated antigen retrieval with Tris-EDTA buffer pH 9.0