

## Anti-ATP2A1/SERCA1 Rabbit pAb



WL02684

For Research Use Only. Not For Use In Diagnostic Procedures

## Product Information

<b>Product name</b>	Anti-ATP2A1/SERCA1 Rabbit pAb
<b>Source</b>	Rabbit
<b>Species reactivity</b>	Human, Mouse, Rat
<b>Tested applications</b>	WB 1:500-1:1000
<b>Cellular localization</b>	Secreted and Cell membrane
<b>Pack size</b>	50/100/200/500/1000µl
<b>Storage</b>	Store at -20°C. <b>Avoid freeze/thaw cycles.</b>
<b>Storage buffer</b>	Supplied in 20 mM phosphate (pH 7.5), 150 mM NaCl, 100 µg/ml BSA, 50% glycerol and less than 0.02% sodium azide

## General Information

<b>Background</b>	Sarcoplasmic and endoplasmic reticulum Ca <sup>2+</sup> ATPases (SERCA) are members of a highly conserved family of Ca <sup>2+</sup> pumps. SERCA pumps transport Ca <sup>2+</sup> from the cytosol to the sarcoplasmic and endoplasmic reticulum lumen against a large concentration gradient. ATP2A1 (SERCA1) is a fast-twitch, skeletal muscle sarcoplasmic reticulum Ca <sup>2+</sup> ATPase. Mutations in this gene cause some autosomal recessive forms of Brody disease, characterized by increasing impairment of muscular relaxation during exercise. Alternative splicing results in two transcript variants encoding different isoforms.
<b>Immunogen</b>	Polyclonal antibody is produced by immunizing animals with a synthetic peptide of ATP2A1/SERCA1.
<b>Purification</b>	Polyclonal antibody was purified by immunogen affinity chromatography.

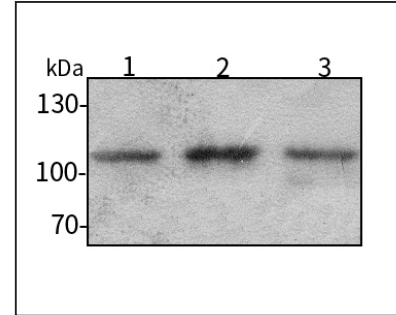
## Anti-ATP2A1/SERCA1 Rabbit pAb



WL02684

For Research Use Only. Not For Use In Diagnostic Procedures

## Product Images



Western blot-Anti-ATP2A1/SERCA1 pAb

Lane 1: Human HeLa cell lysate

Lane 2: Human MCF-7 cell lysate

Lane 3: Human HEK-293 cell lysate

All lanes: Anti-ATP2A1/SERCA1 at 1:1000 dilution

Lysates/proteins at 20-50 µg per lane.

Predicted band size: 110 kDa

Observed band size: 110 kDa