

## Anti-Lyn Rabbit pAb



WL02928

For Research Use Only. Not For Use In Diagnostic Procedures

## Product Information

|                            |                                                                                                                 |  |              |
|----------------------------|-----------------------------------------------------------------------------------------------------------------|--|--------------|
| <b>Product name</b>        | Anti-Lyn Rabbit pAb                                                                                             |  |              |
| <b>Source</b>              | Rabbit                                                                                                          |  |              |
| <b>Species reactivity</b>  | Human, Mouse, Rat                                                                                               |  |              |
| <b>Tested applications</b> | WB                                                                                                              |  | 1:500-1:1000 |
| <b>Pack size</b>           | 50/100/200/500/1000µl                                                                                           |  |              |
| <b>Storage</b>             | Store at -20°C. <b>Avoid freeze/thaw cycles.</b>                                                                |  |              |
| <b>Storage buffer</b>      | Supplied in 20 mM phosphate (pH 7.5), 150 mM NaCl, 100 µg/ml BSA, 50% glycerol and less than 0.02% sodium azide |  |              |

## General Information

## Background

Lyn is a member of the Src family of protein tyrosine kinases, which is mainly expressed in hematopoietic cells, in neural tissues liver, and adipose tissue. In various hematopoietic cells, Lyn has emerged as a key enzyme involved in the regulation of cell activation. In these cells, a small amount of LYN is associated with cell surface receptor proteins, including the B cell antigen receptor (BCR), CD40, or CD19. The abbreviation Lyn is derived from Lck/Yes novel tyrosine kinase, Lck and Yes also being members of the Src kinase family.

## Immunogen

Polyclonal antibody is produced by immunizing animals with a synthetic peptide of Lyn.

## Purification

Polyclonal antibody was purified by immunogen affinity chromatography.

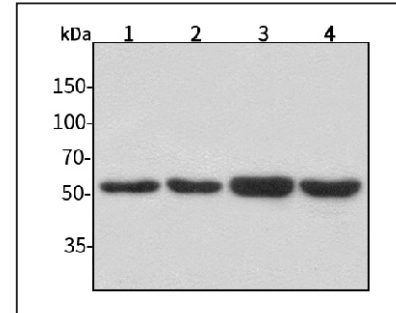
## Anti-Lyn Rabbit pAb



WL02928

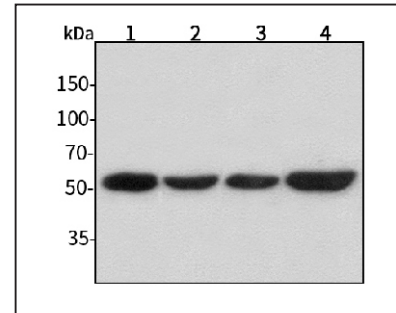
For Research Use Only. Not For Use In Diagnostic Procedures

## Product Images



## Western blot-Anti-Lyn pAb

Lane 1: Human HepG2 cell lysate  
 Lane 2: Human HeLa cell lysate  
 Lane 3: Human BGC-823 cell lysate  
 Lane 4: Human MGC-803 cell lysate  
 All lanes: Anti-Lyn at 1:1000 dilution  
 Lysates/proteins at 20-50 µg per lane.  
 Predicted band size: 58 kDa  
 Observed band size: 58 kDa



## Western blot-Anti-Lyn pAb

Lane 1: Mouse kidney tissue lysate  
 Lane 2: Mouse liver tissue lysate  
 Lane 3: Rat lung tissue lysate  
 Lane 4: Rat colon tissue lysate  
 All lanes: Anti-Lyn at 1:1000 dilution  
 Lysates/proteins at 20-50 µg per lane.  
 Predicted band size: 58 kDa  
 Observed band size: 58 kDa