

## Anti-Cdc25C Rabbit pAb



WL03129

For Research Use Only. Not For Use In Diagnostic Procedures

## Product Information

<b>Product name</b>	Anti-Cdc25C Rabbit pAb	
<b>Source</b>	Rabbit	
<b>Species reactivity</b>	Human, Mouse, Rat	
<b>Tested applications</b>	WB	1:500-1:1000
<b>Pack size</b>	50/100/200/500/1000 $\mu$ l	
<b>Storage</b>	Store at -20°C. <b>Avoid freeze/thaw cycles.</b>	
<b>Storage buffer</b>	Supplied in 20 mM phosphate (pH 7.5), 150 mM NaCl, 100 $\mu$ g/ml BSA, 50% glycerol and less than 0.02% sodium azide	

## General Information

**Background**

Cdc25C a member of the MPI phosphatase family. Activates the cyclin dependent kinase CDC2 by removing two phosphate groups and it is required for entry into mitosis. Shuttles between the nucleus and the cytoplasm due to nuclear localization and nuclear export signals. The protein is nuclear in the M and G1 phases of the cell cycle and moves to the cytoplasm during S and G2. Cdc25B has oncogenic properties, although its role in tumor formation has not been determined. The Cdc25 gene family consists of at least three members that share approximately 40% identity in their most conserved carboxy-terminal sequences.

**Immunogen**

Polyclonal antibody is produced by immunizing animals with a synthetic peptide of Cdc25C.

**Purification**

Polyclonal antibody was purified by immunogen affinity chromatography.

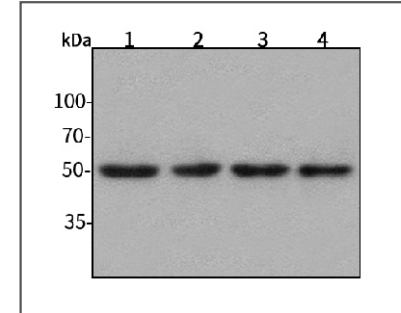
## Anti-Cdc25C Rabbit pAb



WL03129

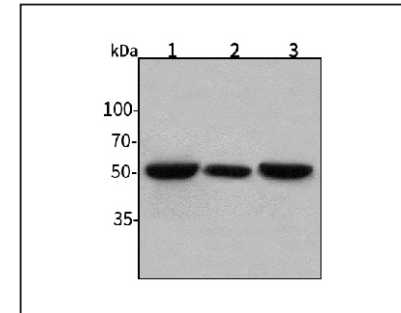
For Research Use Only. Not For Use In Diagnostic Procedures

## Product Images



## Western blot-Anti-Cdc25C pAb

Lane 1: Human HepG2 cell lysate  
 Lane 2: Human Hela cell lysate  
 Lane 3: Human BGC-823 cell lysate  
 Lane 4: Human MGC-803 cell lysate  
 All lanes: Anti-Cdc25C at 1:1000 dilution  
 Lysates/proteins at 20-50  $\mu$ g per lane.  
 Predicted band size: 53 kDa  
 Observed band size: 53 kDa



## Western blot-Anti-Cdc25C pAb

Lane 1: Rat lung tissue lysate  
 Lane 2: Rat colon tissue lysate  
 Lane 3: Rat stomach tissue lysate  
 All lanes: Anti-Cdc25C at 1:1000 dilution  
 Lysates/proteins at 20-50  $\mu$ g per lane.  
 Predicted band size: 53 kDa  
 Observed band size: 53 kDa