

## Anti-Cyclophilin A/PPIA Rabbit pAb



WL00258

For Research Use Only. Not For Use In Diagnostic Procedures

## Product Information

<b>Product name</b>	Anti-Cyclophilin A/PPIA Rabbit pAb
<b>Source</b>	Rabbit
<b>Species reactivity</b>	Human, Mouse, Rat, Cow
<b>Tested applications</b>	WB 1:500-1:1000
<b>Cellular localization</b>	Secreted and Cell membrane
<b>Pack size</b>	50/100/200/500/1000µl
<b>Storage</b>	Store at -20°C. <b>Avoid freeze/thaw cycles.</b>
<b>Storage buffer</b>	Supplied in 20 mM phosphate (pH 7.5), 150 mM NaCl, 100 µg/ml BSA, 50% glycerol and less than 0.02% sodium azide

## General Information

**Background** Cyclophilin A, also named as PPIA and Rotamase A, belongs to the cyclophilin-type PPIase family and PPIase A subfamily. PPIases accelerate the folding of proteins. It catalyzes the cis-trans isomerization of proline imidic peptide bonds in oligopeptides. PPIA forms a trimolecular complex with cyclophilin and calcineurins to inhibit calcineurin phosphatase activity. The encoded protein is a cyclosporin binding-protein and may play a role in cyclosporin A-mediated immunosuppression.

**Immunogen** Polyclonal antibody is produced by immunizing animals with a synthetic peptide of Cyclophilin A/PPIA.

**Purification** Polyclonal antibody was purified by immunogen affinity chromatography.

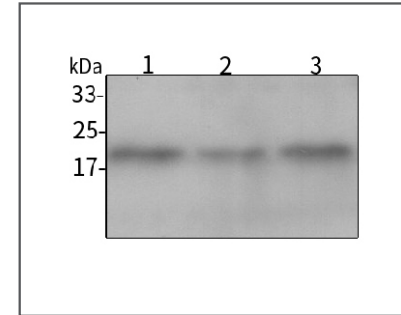
## Anti-Cyclophilin A/PPIA Rabbit pAb



WL00258

For Research Use Only. Not For Use In Diagnostic Procedures

## Product Images



## Western blot-Anti-Cyclophilin A/PPIA pAb

Lane 1: Human MBA-MB-231 cell lysate

Lane 2: Human A549 cell lysate

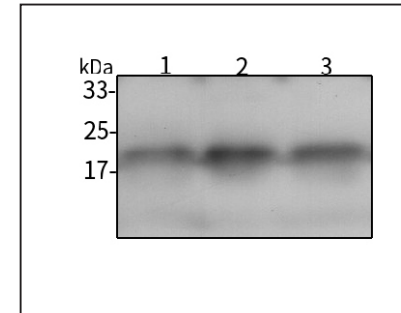
Lane 3: Human HCT116 cell lysate

All lanes: Anti-Cyclophilin A/PPIA at 1:1000 dilution

Lysates/proteins at 20-50 µg per lane.

Predicted band size: 18 kDa

Observed band size: 18 kDa



## Western blot-Anti-Cyclophilin A/PPIA pAb

Lane 1: Mouse kidney tissue lysate

Lane 2: Rat colon tissue lysate

Lane 3: Rat lung tissue lysate

All lanes: Anti-Cyclophilin A/PPIA at 1:1000 dilution

Lysates/proteins at 20-50 µg per lane.

Predicted band size: 18 kDa

Observed band size: 18 kDa