

## Anti-cPLA2 Rabbit pAb



WL02539

For Research Use Only. Not For Use In Diagnostic Procedures

## Product Information

<b>Product name</b>	Anti-cPLA2 Rabbit pAb	
<b>Source</b>	Rabbit	
<b>Species reactivity</b>	Mouse, Rat	
<b>Tested applications</b>	WB	1:1000-1:2000
<b>Pack size</b>	50/100/200/500/1000µl	
<b>Storage</b>	Store at -20°C. <b>Avoid freeze/thaw cycles.</b>	
<b>Storage buffer</b>	Supplied in 20 mM phosphate (pH 7.5), 150 mM NaCl, 100 µg/ml BSA, 50% glycerol and less than 0.02% sodium azide	

## General Information

<b>Background</b>	Cytosolic phospholipase A2 (cPLA2) is a ubiquitously distributed enzyme that catalyzes the hydrolysis of the sn-2 acyl bond of glycerolipids to produce lysophospholipids and release arachidonic acid. Tumor cells often serve as sources for cPLA2 alpha activity. cPLA2 alpha is synthesized in the cytosol where, upon activation, it translocates to sites containing cell membranes, including the Golgi, ER and nuclear membrane. This translocation allows for enzymatic action on membrane phospholipids, generating free arachidonic acid that is converted into proinflammatory eicosanoids.
<b>Immunogen</b>	Polyclonal antibody is produced by immunizing animals with a synthetic peptide of cPLA2.
<b>Purification</b>	Polyclonal antibody was purified by Protein A affinity chromatography.

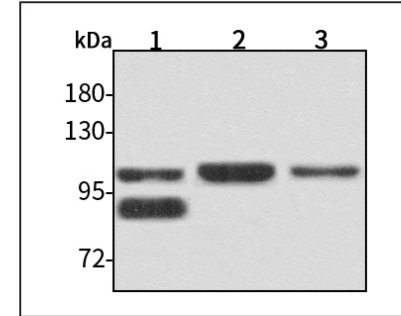
## Anti-cPLA2 Rabbit pAb



WL02539

For Research Use Only. Not For Use In Diagnostic Procedures

## Product Images



Western blot-Anti-cPLA2 pAb

Lane 1: Mouse liver cell lysate

Lane 2: Mouse brain cell lysate

Lane 3: Rat lung cell lysate

All lanes: Anti-cPLA2 at 1:1000 dilution

Lysates/proteins at 20-50 µg per lane.

Predicted band size: 85 kDa

Observed band size: 85-114 kDa