

Anti-KLF2 Rabbit pAb



WL05429

For Research Use Only. Not For Use In Diagnostic Procedures

Product Information

Product name	Anti-KLF2 Rabbit pAb	
Source	Rabbit	
Species reactivity	Human	
Tested applications	WB	1:1000-1:2000
Pack size	50/100/200/500/1000µl	
Storage	Store at -20°C. Avoid freeze/thaw cycles.	
Storage buffer	Supplied in 20 mM phosphate (pH 7.5), 150 mM NaCl, 100 µg/ml BSA, 50% glycerol and less than 0.02% sodium azide	

General Information

Background

KLF2 that belongs to the Kruppel family of transcription factors. The protein acts to bind the CACCC box found in the promoter of target genes to activate their transcription. It plays a role in many processes during development and disease including adipogenesis, embryonic erythropoiesis, epithelial integrity, inflammation .

Immunogen

Polyclonal antibody is produced by immunizing animals with a synthetic peptide of KLF2.

Purification

Polyclonal antibody was purified by Protein A affinity chromatography.

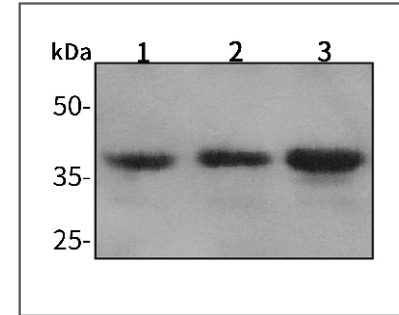
Anti-KLF2 Rabbit pAb



WL05429

For Research Use Only. Not For Use In Diagnostic Procedures

Product Images



Western blot-Anti-KLF2 pAb

Lane 1: Human HEK-293 cell lysate

Lane 2: Human SW480 cell lysate

Lane 3: Human MCF-7 cell lysate

All lanes: Anti-KLF2 at 1:1000 dilution

Lysates/proteins at 20-50 µg per lane.

Predicted band size: 37 kDa

Observed band size: 37 kDa