

## Anti-KDM5A Rabbit pAb



WL05053

For Research Use Only. Not For Use In Diagnostic Procedures

## Product Information

<b>Product name</b>	Anti-KDM5A Rabbit pAb
<b>Source</b>	Rabbit
<b>Species reactivity</b>	Human
<b>Tested applications</b>	Western blot 1:1000-1:2000 <i>*Suggested working dilutions are given as a guide only. It is recommended that the user titrates the product for use in their own experiment using appropriate negative and positive controls.</i>
<b>Molecular Wt.</b>	192 kDa 50/100/200/500/1000μl
<b>Pack size</b>	Store at -20°C. <b>Avoid freeze/thaw cycles.</b>
<b>Storage</b>	Supplied in 20 mM phosphate (pH 7.5), 150 mM NaCl, 100 μg/ml
<b>Storage buffer</b>	BSA, 50% glycerol and less than 0.02% sodium azide

## General Information

<b>Background</b>	KDM5A, also named as JARID1A, RBBP2 and RBP2, belongs to the JARID1 histone demethylase family. KDM5A is a Histone demethylase that specifically demethylates 'Lys-4' of histone H3, thereby playing a central role in histone code.
<b>Immunogen</b>	Polyclonal antibody is produced by immunizing animals with a synthetic peptide of KDM5A.
<b>Purification</b>	Polyclonal antibody was purified by Protein A affinity chromatography.

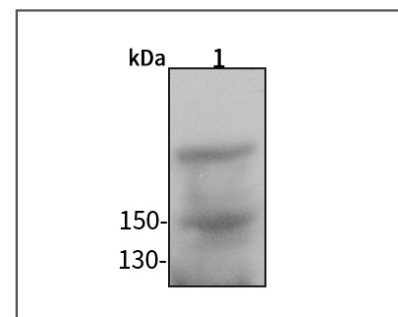
## Anti-KDM5A Rabbit pAb



WL05053

For Research Use Only. Not For Use In Diagnostic Procedures

## Product Images



## Western blot-Anti-KDM5A pAb

Lane 1: Human Hela cell lysate 40μg  
 Separation gel: 6% polyacrylamide  
 Electrophoresis: 100V, 4°C, 3h  
 Transmembrane: 100V, 4°C, 1h  
 Blocking: 5% w/v nonfat dry milk, 1× TBST, at RT with gentle shaking  
 Primary antibody: 1:1000 in blocking buffer, 4°C, overnight  
 Secondary antibody (WLA023a) : 1:5000-1:10000, 45min  
 Detection: ECL, 30s-2min