

## Anti-USF1 Rabbit pAb



WL02667

For Research Use Only. Not For Use In Diagnostic Procedures

## Product Information

<b>Product name</b>	Anti-USF1 Rabbit pAb	
<b>Source</b>	Rabbit	
<b>Species reactivity</b>	Human, Mouse, Rat	
<b>Tested applications</b>	Western blot	1:500-1:1000

*\*Suggested working dilutions are given as a guide only. It is recommended that the user titrates the product for use in their own experiment using appropriate negative and positive controls.*

<b>Molecular Wt.</b>	43 kDa
<b>Pack size</b>	50/100/200/500/1000µl
<b>Storage</b>	Store at -20°C. <b>Avoid freeze/thaw cycles.</b>
<b>Storage buffer</b>	Supplied in 20 mM phosphate (pH 7.5), 150 mM NaCl, 100 µg/ml BSA, 50% glycerol and less than 0.02% sodium azide

## General Information

**Background**

The ubiquitously expressed cellular upstream stimulatory factor (USF) consists of (USF-1) and (USF-2) polypeptides which independently exhibit site-specific DNA binding and are members of the c-Myc-related family of regulatory factors containing helix-loop-helix domains. USF1 gene encodes a member of the basic helix-loop-helix leucine zipper family, and can function as a cellular transcription factor. The encoded protein can activate transcription through pyrimidine-rich initiator (Inr) elements and E-box motifs. This gene has been linked to familial combined hyperlipidemia (FCHL).

**Immunogen**

Polyclonal antibody is produced by immunizing animals with a synthetic peptide of USF1.

**Purification**

Polyclonal antibody was purified by immunogen affinity chromatography.

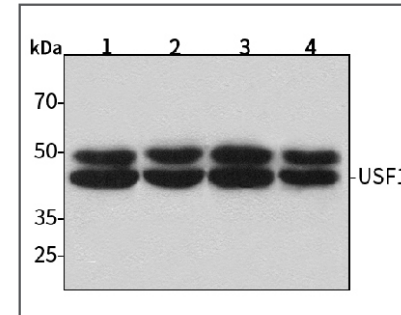
## Anti-USF1 Rabbit pAb



WL02667

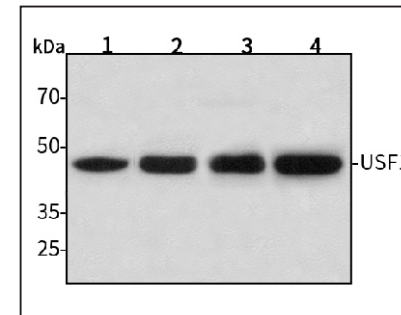
For Research Use Only. Not For Use In Diagnostic Procedures

## Product Images



Western blot-Anti-USF1 pAb

Lane 1: Human HepG2 cell lysate 30µg  
 Lane 2: Human Hela cell lysate 30µg  
 Lane 3: Human BGC-823 cell lysate 30µg  
 Lane 4: Human MGC-803 cell lysate 30µg  
 Separation gel: 11% polyacrylamide  
 Electrophoresis: 100V, 4°C, 3h  
 Transmembrane: 100V, 4°C, 1h  
 Blocking: 5% w/v nonfat dry milk, 1×TBST, at RT with gentle shaking  
 Primary antibody: 1:1000 in blocking buffer, 4°C, overnight  
 Secondary antibody (WLA023a) : 1:5000-1:10000, 45min  
 Detection: ECL, 30s-2min



Western blot-Anti-USF1 pAb

Lane 1: Mouse heart tissue lysate 30µg  
 Lane 2: Mouse liver tissue lysate 30µg  
 Lane 3: Rat colon tissue lysate 30µg  
 Lane 4: Rat stomach tissue lysate 30µg  
 Separation gel: 11% polyacrylamide  
 Electrophoresis: 100V, 4°C, 3h  
 Transmembrane: 100V, 4°C, 1h  
 Blocking: 5% w/v nonfat dry milk, 1×TBST, at RT with gentle shaking  
 Primary antibody: 1:1000 in blocking buffer, 4°C, overnight  
 Secondary antibody (WLA023a) : 1:5000-1:10000, 45min  
 Visualization: ECL, 30s-2min