

Anti-MCT1 Rabbit pAb



WL02499

For Research Use Only. Not For Use In Diagnostic Procedures

Product Information

Product name	Anti-MCT1 Rabbit pAb	
Source	Rabbit	
Species reactivity	Human	
Tested applications	WB	1:500-1:1000
Pack size	50/100/200/500/1000µl	
Storage	Store at -20°C. Avoid freeze/thaw cycles.	
Storage buffer	Supplied in 20 mM phosphate (pH 7.5), 150 mM NaCl, 100 µg/ml BSA, 50% glycerol and less than 0.02% sodium azide	

General Information

Background Monocarboxylates, such as lactate and pyruvate, play an integral role in cellular metabolism. Lactic acid is produced in large quantities as a result of glycolysis, which provides the majority of ATP to cells under normal physiological conditions. May play a role in promoting lymphoid tumor development: lymphoid cell lines overexpressing MCTS1 exhibit increased growth rates and display increased protection against apoptosis. MCT1 is widely expressed and is the major form of MCT in tumor cells and erythrocytes. MCT2 is highly expressed in liver and testis, while MCT3 and MCT4 are predominantly expressed in skeletal muscle.

Immunogen Polyclonal antibody is produced by immunizing animals with a synthetic peptide of MCT1.

Purification Polyclonal antibody was purified by immunogen affinity chromatography.

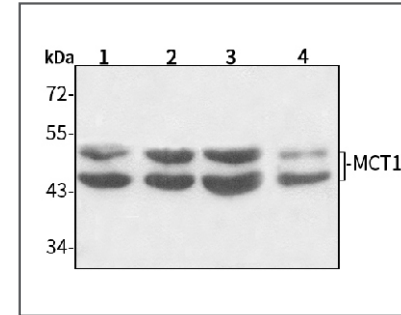
Anti-MCT1 Rabbit pAb



WL02499

For Research Use Only. Not For Use In Diagnostic Procedures

Product Images



Western blot-Anti-MCT1 pAb

Lane 1: Human HepG2 cell lysate
 Lane 2: Human Hela cell lysate
 Lane 3: Human BGC-823 cell lysate
 Lane 4: Human MGC-803 cell lysate
 All lanes: Anti-MCT1 at 1:1000 dilution
 Lysates/proteins at 20-50 µg per lane.
 Predicted band size: 54 kDa
 Observed band size: 38-45kDa