

Anti- PRKACB Rabbit pAb



WL04408

For Research Use Only. Not For Use In Diagnostic Procedures

Product Information

Product name	Anti- PRKACB Rabbit pAb	
Source	Rabbit	
Species reactivity	Human, Mouse, Rat	
Tested applications	Western blot	1:1000-1:2000
Molecular Wt.	46 kDa	
Pack size	50/100/200/500/1000 μ l	
Storage	Store at -20°C. Avoid freeze/thaw cycles.	
Storage buffer	Supplied in 20 mM phosphate (pH 7.5), 150 mM NaCl, 100 μ g/ml BSA, 50% glycerol and less than 0.02% sodium azide	

General Information

Background	cAMP causes the dissociation of the inactive holoenzyme into a dimer of regulatory subunits bound to four cAMP and two free monomeric catalytic subunits. Second messenger cyclic AMP (cAMP) mediates diverse cellular responses to external signals such as proliferation, ion transport, regulation of metabolism and gene transcription by activation of the cAMP-dependent protein kinase (cAPK or PKA). Activation of transcription upon elevation of cAMP levels results from translocation of PKA to the nucleus where it phosphorylates the transcription factor cAMP response element binding protein (CREB) on serine 133 which in turn leads to TFIIB binding to TATA-box-binding protein TBP1, thus linking phospho-CREB to the pol II transcription initiation complex.
Immunogen	Polyclonal antibody is produced by immunizing animals with a synthetic peptide of PRKACB.
Purification	Polyclonal antibody was purified by Protein A affinity chromatography.

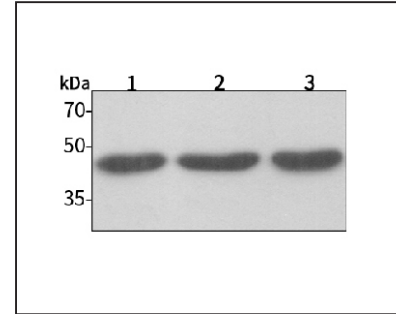
Anti- PRKACB Rabbit pAb



WL04408

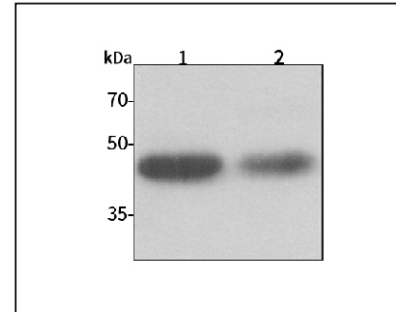
For Research Use Only. Not For Use In Diagnostic Procedures

Product Images



Western blot-Anti- PRKACB pAb

Lane 1: Human HeLa cell lysate 30 μ g
 Lane 2: Human MCF-7 cell lysate 30 μ g
 Lane 3: Human HEK-293 cell lysate 30 μ g
 Separation gel: 10% polyacrylamide
 Electrophoresis: 100V, 4°C, 3h
 Transmembrane: 100V, 4°C, 1h
 Blocking: 5% w/v nonfat dry milk, 1 \times TBST, at RT with gentle shaking
 Primary antibody: 1:1000 in blocking buffer, 4°C, overnight
 Secondary antibody (WLA023a) : 1:5000-1:10000, 45min
 Detection: ECL, 30s-2min



Western blot-Anti- PRKACB pAb

Lane 1: Mouse heart tissue lysate 30 μ g
 Lane 2: Rat stomach tissue lysate 30 μ g
 Separation gel: 10% polyacrylamide
 Electrophoresis: 100V, 4°C, 3h
 Transmembrane: 100V, 4°C, 1h
 Blocking: 5% w/v nonfat dry milk, 1 \times TBST, at RT with gentle shaking
 Primary antibody: 1:1000 in blocking buffer, 4°C, overnight
 Secondary antibody (WLA023a) : 1:5000-1:10000, 45min
 Detection: ECL, 30s-2min