

Anti-RAB7 Rabbit pAb



WL00324

For Research Use Only. Not For Use In Diagnostic Procedures

Product Information

Product name	Anti-RAB7 Rabbit pAb	
Source	Rabbit	
Species reactivity	Human, Mouse, Rat	
Tested applications	WB	1:500-1:1000
Pack size	50/100/200/500/1000µl	
Storage	Store at -20°C. Avoid freeze/thaw cycles.	
Storage buffer	Supplied in 20 mM phosphate (pH 7.5), 150 mM NaCl, 100 µg/ml BSA, 50% glycerol and less than 0.02% sodium azide	

General Information

Background	RAB7 belongs to the small GTPase superfamily and Rab family. RAS-related GTP-binding proteins that are important regulators of vesicular transport. Each RAB protein targets multiple proteins that act in exocytic endocytic pathways.
-------------------	---

Immunogen	Polyclonal antibody is produced by immunizing animals with a synthetic peptide of RAB7.
------------------	---

Purification	Polyclonal antibody was purified by immunogen affinity chromatography.
---------------------	--

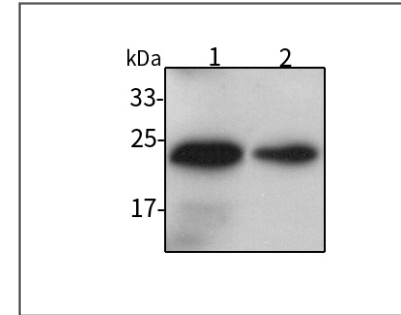
Anti-RAB7 Rabbit pAb



WL00324

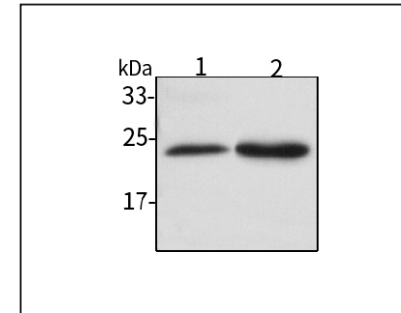
For Research Use Only. Not For Use In Diagnostic Procedures

Product Images



Western blot-Anti-RAB7 pAb

Lane 1: Human HCT116 cell lysate
 Lane 2: Human HUVEC cell lysate
 All lanes: Anti-RAB7 at 1:1000 dilution
 Lysates/proteins at 20-50 µg per lane.
 Predicted band size: 23 kDa
 Observed band size: 23 kDa



Western blot-Anti-RAB7 pAb

Lane 1: Mouse kidney tissue lysate
 Lane 2: Rat liver tissue lysate
 All lanes: Anti-RAB7 at 1:1000 dilution
 Lysates/proteins at 20-50 µg per lane.
 Predicted band size: 23 kDa
 Observed band size: 23 kDa