

## Anti- GSTT1 Rabbit pAb



WL04390

For Research Use Only. Not For Use In Diagnostic Procedures

## Product Information

<b>Product name</b>	Anti- GSTT1 Rabbit pAb		
<b>Source</b>	Rabbit		
<b>Species reactivity</b>	Human		
<b>Tested applications</b>	WB	1:500-1:1000	
<b>Pack size</b>	50/100/200/500/1000µl		
<b>Storage</b>	Store at -20°C. <b>Avoid freeze/thaw cycles.</b>		
<b>Storage buffer</b>	Supplied in 20 mM phosphate (pH 7.5), 150 mM NaCl, 100 µg/ml BSA, 50% glycerol and less than 0.02% sodium azide		

## General Information

**Background** GSTT1 belongs to a superfamily of proteins which catalyze the conjugation of reduced glutathione to a variety of electrophilic and hydrophobic compounds. GSTs can be divided into five main classes: alpha, mu, pi, theta, and zeta (which includes GSTT1 and GSTT2). The GSTT1 gene is haplotype-specific and is absent from 38% of the population. GSTT1-null genotypes are seen as having a higher risk of developing leukoplakia.

**Immunogen** Polyclonal antibody is produced by immunizing animals with a synthetic peptide of GSTT1.

**Purification** Polyclonal antibody was purified by immunogen affinity chromatography.

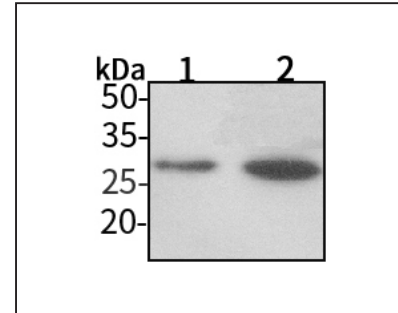
## Anti- GSTT1 Rabbit pAb



WL04390

For Research Use Only. Not For Use In Diagnostic Procedures

## Product Images



## Western blot-Anti-GSTT1 pAb

Lane 1: Human HEK-293 cell lysate

Lane 2: Human A549 cell lysate

All lanes: Anti-GSTT1 at 1:1000 dilution

Lysates/proteins at 20-50 µg per lane.

Predicted band size: 27 kDa

Observed band size: 27 kDa