

## Anti-Sortilin/NT3 Rabbit pAb



WL04996

For Research Use Only. Not For Use In Diagnostic Procedures

## Product Information

<b>Product name</b>	Anti-Sortilin/NT3 Rabbit pAb
<b>Source</b>	Rabbit
<b>Species reactivity</b>	Human, Mouse, Rat
<b>Tested applications</b>	WB 1:1000-1:2000
<b>Pack size</b>	50/100/200/500/1000µl
<b>Storage</b>	Store at -20°C. <b>Avoid freeze/thaw cycles.</b>
<b>Storage buffer</b>	Supplied in 20 mM phosphate (pH 7.5), 150 mM NaCl, 100 µg/ml BSA, 50% glycerol and less than 0.02% sodium azide

## General Information

**Background** This gene encodes a member of the VPS10-related sortilin family of proteins. The encoded preproprotein is proteolytically processed by furin to generate the mature receptor. This receptor plays a role in the trafficking of different proteins to either the cell surface, or subcellular compartments such as lysosomes and endosomes.

**Immunogen** Polyclonal antibody is produced by immunizing animals with a synthetic peptide of Sortilin/NT3.

**Purification** Polyclonal antibody was purified by Protein A affinity chromatography.

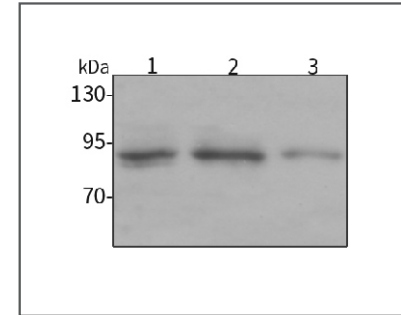
## Anti-Sortilin/NT3 Rabbit pAb



WL04996

For Research Use Only. Not For Use In Diagnostic Procedures

## Product Images



## Western blot-Anti-Sortilin/NT3 pAb

Lane 1: Human MBA-MD-231 cell lysate

Lane 2: Human A549 cell lysate

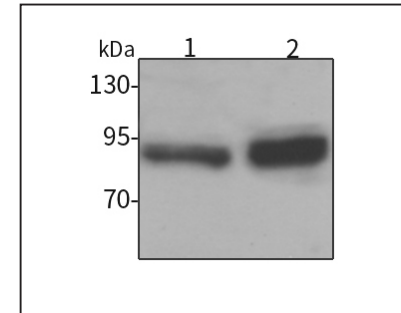
Lane 3: Human HUVEC cell lysate

All lanes: Anti-Sortilin/NT3 at 1:1000 dilution

Lysates/proteins at 20-50 µg per lane.

Predicted band size: 92 kDa

Observed band size: 100 kDa



## Western blot-Anti-Sortilin/NT3 pAb

Lane 1: Mouse brain tissue lysate

Lane 2: Rat lung tissue lysate

All lanes: Anti-Sortilin/NT3 at 1:1000 dilution

Lysates/proteins at 20-50 µg per lane.

Predicted band size: 92 kDa

Observed band size: 100 kDa