

Anti-MSH6 Rabbit pAb



WL04862

For Research Use Only. Not For Use In Diagnostic Procedures

Product Information

Product name	Anti-MSH6 Rabbit pAb	
Source	Rabbit	
Species reactivity	Human, Mouse	
Tested applications	WB	1:1000-1:2000
	IHC	1:500
Cellular localization	Nucleus	
Pack size	50/100/200/500/1000µl	
Storage	Store at -20°C. Avoid freeze/thaw cycles.	
Storage buffer	Supplied in 20 mM phosphate (pH 7.5), 150 mM NaCl, 100 µg/ml BSA, 50% glycerol and less than 0.02% sodium azide	

General Information

Background

This gene encodes a member of the DNA mismatch repair MutS family. MutS protein helps in the recognition of mismatched nucleotides prior to their repair. The encoded protein heterodimerizes with MSH2 to form a mismatch recognition complex that functions as a bidirectional molecular switch that exchanges ADP and ATP as DNA mismatches are bound and dissociated. Mutations in this gene may be associated with hereditary nonpolyposis colon cancer, colorectal cancer, and endometrial cancer.

Immunogen

Polyclonal antibody is produced by immunizing animals with a synthetic peptide of MSH6.

Purification

Polyclonal antibody was purified by Protein A affinity chromatography.

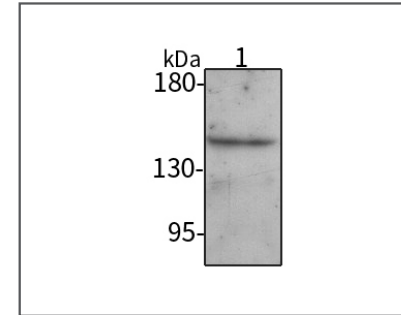
Anti-MSH6 Rabbit pAb



WL04862

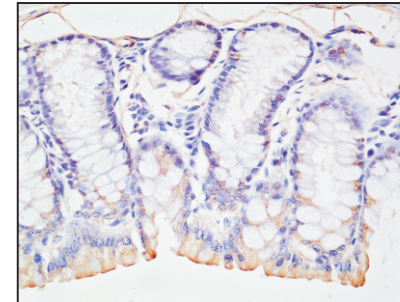
For Research Use Only. Not For Use In Diagnostic Procedures

Product Images



Western blot-Anti-MSH6 pAb

Lane 1: Human HEK-293 cell lysate
 All lanes: Anti-MSH6 at 1:1000 dilution
 Lysates/proteins at 20-50 µg per lane.
 Predicted band size: 28 kDa
 Observed band size: 28 kDa



Immunohistochemistry-Anti-MSH6 pAb

Immunohistochemical analysis of paraffin-embedded mouse colon using anti-MSH6 Rabbit Antibody at 1:500 dilution.
 Perform heat mediated antigen retrieval with Tris-EDTA buffer pH 9.0