

Anti-LRP5 Rabbit pAb



WL04727

For Research Use Only. Not For Use In Diagnostic Procedures

Product Information

Product name	Anti-LRP5 Rabbit pAb	
Source	Rabbit	
Species reactivity	Human, Mouse, Rat	
Tested applications	WB	1:1000
	IF	1:200
Cellular localization	Membrane. Endoplasmic reticulum	
Pack size	50/100/200/500/1000µl	
Storage	Store at -20°C. Avoid freeze/thaw cycles.	
Storage buffer	Supplied in 20 mM phosphate (pH 7.5), 150 mM NaCl, 100 µg/ml BSA, 50% glycerol and less than 0.02% sodium azide	

General Information

Background

Low-density lipoprotein receptor-related protein 5 (LRP5) is a single-pass type I membrane protein with EGF-like and LDLR domains in the extracellular domain. LRP5 and LRP6 act as coreceptors with Frizzled for Wnt. The complex of Wnt-Fzd-LRP5-LRP6 triggers beta-catenin signaling through inducing aggregation of receptor-ligand complexes into ribosome-sized signalsomes. LRP5 plays a key role in skeletal homeostasis and many bone density related diseases are caused by mutations in LRP5 gene.

Immunogen

Polyclonal antibody is produced by immunizing animals with a synthetic peptide of LRP5.

Purification

Polyclonal antibody was purified by immunogen affinity chromatography.

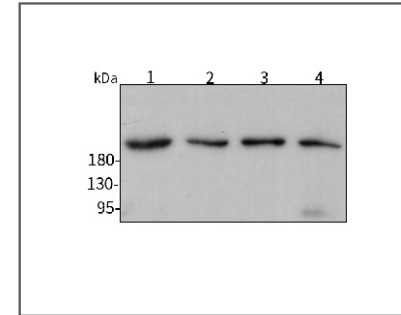
Anti-LRP5 Rabbit pAb



WL04727

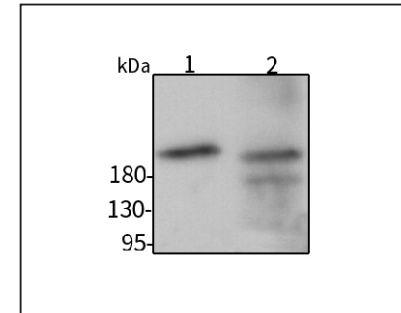
For Research Use Only. Not For Use In Diagnostic Procedures

Product Images



Western blot-Anti-LRP5 pAb

Lane 1: Human HeLa cell lysate
 Lane 1: Human HEK-293 cell lysate
 Lane 1: Human HCT116 cell lysate
 Lane 1: Human MBA-MD-231 cell lysate
 All lanes: Anti-LRP5 at 1:1000 dilution
 Lysates/proteins at 20-50 µg per lane.
 Predicted band size: 179 kDa
 Observed band size: 200 kDa



Western blot-Anti-LRP5 pAb

Lane 1: Mouse liver tissue lysate
 Lane 2: Rat lung tissue lysate
 All lanes: Anti-LRP5 at 1:1000 dilution
 Lysates/proteins at 20-50 µg per lane.
 Predicted band size: 179 kDa
 Observed band size: 200 kDa