

## Anti-ALDH1A1 Rabbit pAb



WL02762

For Research Use Only. Not For Use In Diagnostic Procedures

## Product Information

<b>Product name</b>	Anti-ALDH1A1 Rabbit pAb	
<b>Source</b>	Rabbit	
<b>Species reactivity</b>	Human, Mouse, Rat	
<b>Tested applications</b>	WB	1:500-1:1000
	IHC	1:100-1:400
	IF	1:300
<b>Cellular localization</b>	Cytoplasm. Cell projection	

**Pack size** 50/100/200/500/1000µl

**Storage** Store at -20°C. **Avoid freeze/thaw cycles.**

**Storage buffer** Supplied in 20 mM phosphate (pH 7.5), 150 mM NaCl, 100 µg/ml BSA, 50% glycerol and less than 0.02% sodium azide

## General Information

**Background** Aldehyde dehydrogenases (ALDHs) mediate NADP<sup>+</sup>-dependent oxidation of aldehydes into acids during the detoxification of alcohol-derived acetaldehyde; metabolism of corticosteroids, biogenic amines and neurotransmitters; and lipid peroxidation. Recent studies suggest that control of retinoid signaling through ALDH1A1 may influence hematopoietic stem cell differentiation. Several studies have suggested that ALDH1A1 is a potential marker for cancer stem cells and chemoresistance in several tumor types, such as melanoma, lung cancer, and glioblastoma.

**Immunogen** Polyclonal antibody is produced by immunizing animals with a synthetic peptide of ALDH1A1.

**Purification** Polyclonal antibody was purified by immunogen affinity chromatography.

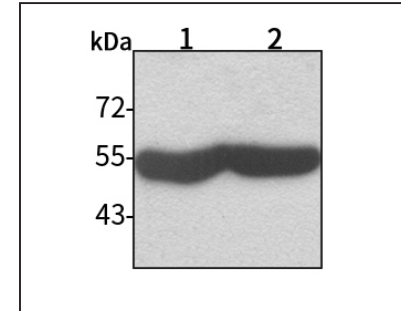
## Anti-ALDH1A1 Rabbit pAb



WL02762

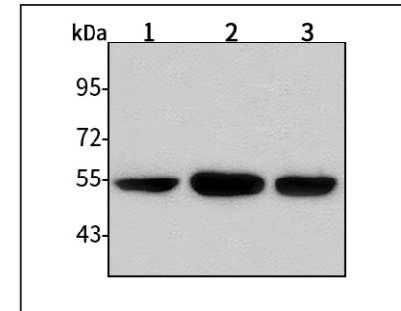
For Research Use Only. Not For Use In Diagnostic Procedures

## Product Images



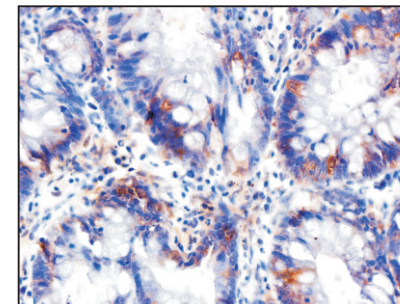
## Western blot-Anti-ALDH1A1 pAb

Lane 1: Human HeLa cell lysate  
 Lane 2: Human MGC-803 cell lysate  
 Lane 3: Human SGC-7901 cell lysate  
 Lane 4: Human HEK-293 cell lysate  
 All lanes: Anti-1ALDH1A1 at 1:1000 dilution  
 Lysates/proteins at 20-50 µg per lane.  
 Predicted band size: 55 kDa  
 Observed band size: 55 kDa



## Western blot-Anti-ALDH1A1 pAb

Lane 1: Mouse kidney tissue lysate  
 Lane 2: Mouse liver tissue lysate  
 Lane 3: Rat stomach tissue lysate  
 All lanes: Anti-1ALDH1A1 at 1:1000 dilution  
 Lysates/proteins at 20-50 µg per lane.  
 Predicted band size: 55 kDa  
 Observed band size: 55 kDa



## Immunohistochemistry-Anti-ALDH1A1 pAb

Immunohistochemical analysis of paraffin-embedded human colon cancer using anti-ALDH1A1 Rabbit Antibody at 1:150 dilution.  
 Perform heat mediated antigen retrieval with Tris-EDTA buffer pH 9.0

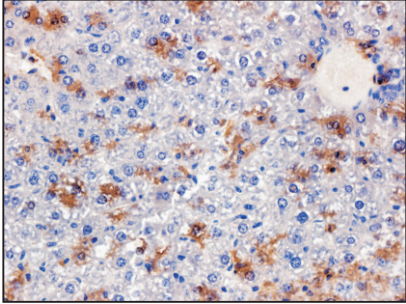
## Anti-ALDH1A1 Rabbit pAb



WL02762

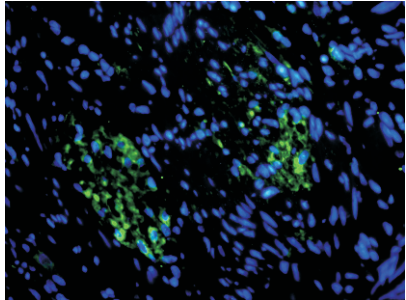
For Research Use Only. Not For Use In Diagnostic Procedures

### Product Images



#### Immunohistochemistry-Anti-ALDH1A1 pAb

Immunohistochemical analysis of paraffin-embedded mouse liver using anti-ALDH1A1 Rabbit Antibody at 1:150 dilution.  
Perform heat mediated antigen retrieval with Tris-EDTA buffer pH 9.0



#### Immunofluorescence-Anti-ALDH1A1 pAb

Immunofluorescence analysis of paraffin-embedded human colon cancer using anti-ALDH1A1 Rabbit Antibody at 1:300 dilution.  
Perform heat mediated antigen retrieval with Tris-EDTA buffer pH 9.0