

Anti-ADAM10 Rabbit pAb



WL04661

For Research Use Only. Not For Use In Diagnostic Procedures

Product Information

Product name	Anti-ADAM10 Rabbit pAb
Source	Rabbit
Species reactivity	Human, Mouse, Rat
Tested applications	WB 1:500-1:1000
Pack size	50/100/200/500/1000µl
Storage	Store at -20°C. Avoid freeze/thaw cycles.
Storage buffer	Supplied in 20 mM phosphate (pH 7.5), 150 mM NaCl, 100 µg/ml BSA, 50% glycerol and less than 0.02% sodium azide

General Information

Background	ADAM10, a member of the ADAM (a disintegrin and metalloprotease) family, ADAM10 is a TNF-processing enzyme that cleaves pro-TNF, a membrane-bound precursor protein, at Ala 76-Val 77, which causes membrane shedding of soluble TNF.
-------------------	---

Immunogen	Polyclonal antibody is produced by immunizing animals with a synthetic peptide of ADAM10.
------------------	---

Purification	Polyclonal antibody was purified by immunogen affinity chromatography.
---------------------	--

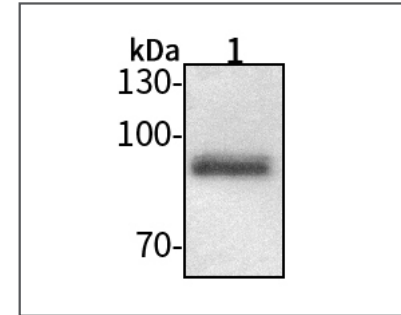
Anti-ADAM10 Rabbit pAb



WL04661

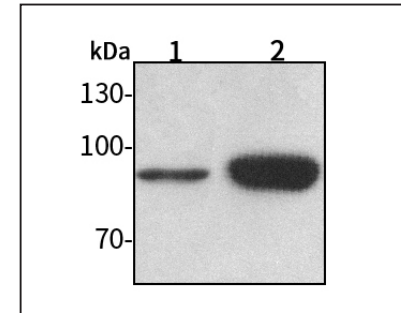
For Research Use Only. Not For Use In Diagnostic Procedures

Product Images



Western blot-Anti-ADAM10 pAb

Lane 1: Human HEK-293 cell lysate
 All lanes: Anti-ADAM10 at 1:1000 dilution
 Lysates/proteins at 20-50 µg per lane.
 Predicted band size: 84 kDa
 Observed band size: 84 kDa



Western blot-Anti-ADAM10 pAb

Lane 1: Mouse kidney tissue lysate
 Lane 2: Rat liver tissue lysate
 All lanes: Anti-ADAM10 at 1:1000 dilution
 Lysates/proteins at 20-50 µg per lane.
 Predicted band size: 84 kDa
 Observed band size: 84 kDa