

Anti-c-Cbl Rabbit pAb



WL0155

For Research Use Only. Not For Use In Diagnostic Procedures

Product Information

Product name	Anti-c-Cbl Rabbit pAb	
Source	Rabbit	
Species reactivity	Human	
Tested applications	WB	1:500-1:1000
Pack size	50/100/200/500/1000µl	
Storage	Store at -20°C. Avoid freeze/thaw cycles.	
Storage buffer	Supplied in 20 mM phosphate (pH 7.5), 150 mM NaCl, 100 µg/ml BSA, 50% glycerol and less than 0.02% sodium azide	

General Information

Background

This c-Cbl is a RING finger E3 ubiquitin ligase. The encoded protein is one of the enzymes required for targeting substrates for degradation by the proteasome. c-Cbl mediates the transfer of ubiquitin from ubiquitin conjugating enzymes (E2) to specific substrates. This protein also contains an N-terminal phosphotyrosine binding domain that allows it to interact with numerous tyrosine-phosphorylated substrates and target them for proteasome degradation. As such it functions as a negative regulator of many signal transduction pathways.

Immunogen

Polyclonal antibody is produced by immunizing animals with a synthetic peptide of c-Cbl.

Purification

Polyclonal antibody was purified by immunogen affinity chromatography.

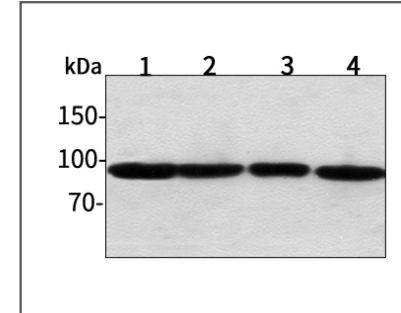
Anti-c-Cbl Rabbit pAb



WL0155

For Research Use Only. Not For Use In Diagnostic Procedures

Product Images



Western blot-Anti-c-Cbl pAb

Lane 1: Human HepG2 cell lysate
 Lane 2: Human Hela cell lysate
 Lane 3: Human BGC-823 cell lysate
 Lane 4: Human MGC-803 cell lysate
 All lanes: Anti-c-Cbl at 1:1000 dilution
 Lysates/proteins at 20-50 µg per lane.
 Predicted band size: 100 kDa
 Observed band size: 100 kDa