

Anti-LHX5 Rabbit pAb



WL04916

For Research Use Only. Not For Use In Diagnostic Procedures

Product Information

Product name	Anti-LHX5 Rabbit pAb		
Source	Rabbit		
Species reactivity	Human		
Tested applications	WB	1:500-1:1000	
Pack size	50/100/200/500/1000µl		
Storage	Store at -20°C. Avoid freeze/thaw cycles.		
Storage buffer	Supplied in 20 mM phosphate (pH 7.5), 150 mM NaCl, 100 µg/ml BSA, 50% glycerol and less than 0.02% sodium azide		

General Information

Background

During development, genetically distinct subtypes of motor neurons express unique combinations of LIM-type homeodomain factors, which regulate cell migration and guide motor axons to establish the fidelity of a binary choice in axonal trajectory. During development, genetically distinct subtypes of motor neurons express unique combinations of LIM-type homeodomain factors, which regulate cell migration and guide motor axons to establish the fidelity of a binary choice in axonal trajectory.

Immunogen

Polyclonal antibody is produced by immunizing animals with a synthetic peptide of LHX5.

Purification

Polyclonal antibody was purified by immunogen affinity chromatography.

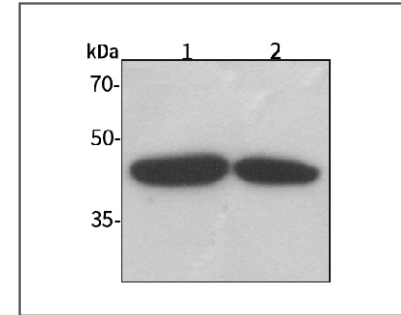
Anti-LHX5 Rabbit pAb



WL04916

For Research Use Only. Not For Use In Diagnostic Procedures

Product Images



Western blot-Anti-LHX5 pAb

Lane 1: Human HeLa cell lysate

Lane 2: Human MCF-7 cell lysate

All lanes: Anti-LHX5 at 1:1000 dilution

Lysates/proteins at 20-50 µg per lane.

Predicted band size: 44 kDa

Observed band size: 44 kDa